

2022  
SPRING

NEW  
RELEASES

**Makita**

**XGT**

BEYOND LIMITS

40V | 80V max



A NEW SYSTEM OF EQUIPMENT & TOOLS





# OVER 100 YEARS OF INNOVATION

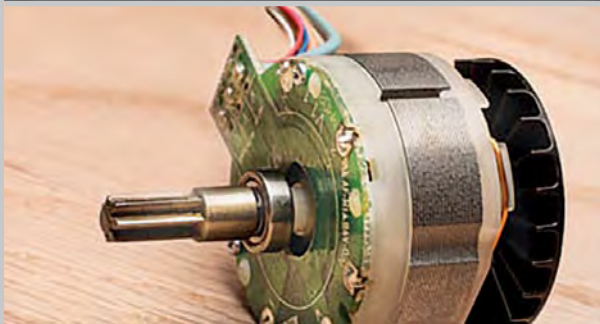
Makita Corporation was founded in 1915 as an electric motor sales and repair company. Today, as a global brand in over 40 countries, Makita is an innovation leader, manufacturing best-in-class products at 10 plants operating in 8 countries.



**1978** Introduced the first cordless tool



**2005** Created 18V LXT® Lithium-Ion System



**2009** Introduced the industry's first 18V brushless motor impact driver



**2012** Released the first cordless tool powered by two 18V lithium-ion batteries

# CORDLESS SOLUTIONS

**NEW**



40V<sub>max</sub>



80V<sub>max</sub>



**100  
PRODUCTS\***  
ONE SYSTEM



MAXIMUM PERFORMANCE

18V



36V



**300+  
PRODUCTS\***  
ONE SYSTEM



PRECISE HANDLING

12V<sub>max</sub>



**70+ PRODUCTS\***  
ONE SYSTEM



\*In 2022





BEYOND LIMITS



**OUTPOWER**



**OUTSMART**



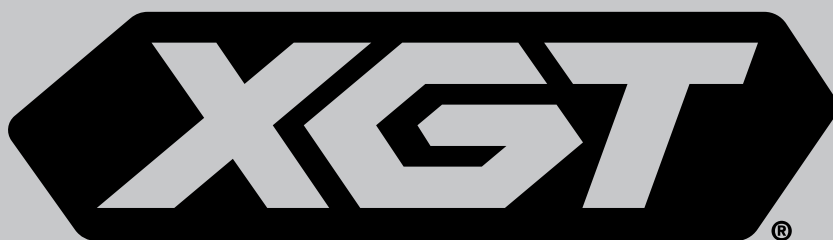
**OUTLAST**





**XGT® is a new 40V | 80V max system of cordless equipment and tools. XGT® outpowers, outsmarts, and outlasts the rest. Through Makita's innovative engineering, the technology within the XGT® system will create the equipment and tools of the future.**





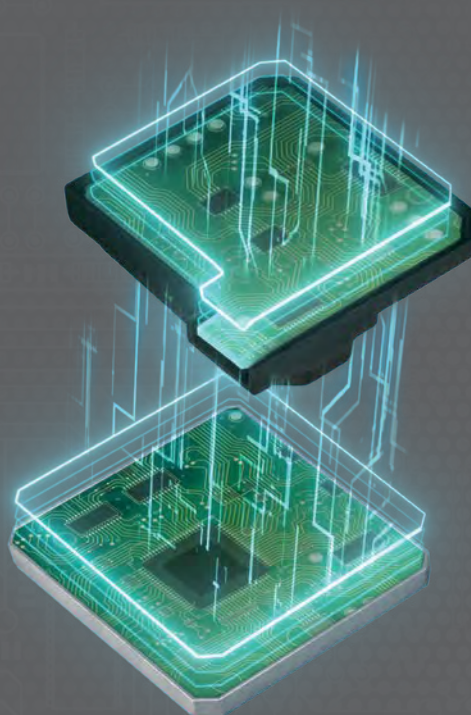
## OUTPOWER

### ***PURE COPPER WIRE***

Makita® XGT® Products feature purpose-built brushless motors with more copper windings for increased power output.

### ***RARE EARTH MAGNETS***

Rare earth magnets of the highest quality are engineered within the brushless motors to maximize power and performance.



## OUTSMART

### ***BUILT-IN MICROCHIPS***

Built-in microchips in both tool and battery allow for real-time digital communication, actively monitoring heat, overload, and over-discharge.

### ***DIGITAL COMMUNICATION***

Digital communication between XGT® Tools and Batteries through enhanced digital communication technology optimize performance to deliver up to 2X longer sustained power during demanding applications.



# BEYOND LIMITS

Learn More at [makitatools.com/XGT](https://makitatools.com/XGT)



## OUTLAST

### **IMPACT ABSORBENT STRUCTURE**

Durable outer casing and cell holder create space within the battery to absorb impact.

### **WATER & DUST RESISTANCE**

Water and dust-resistant triple layer structure and an enhanced terminal structure are engineered to protect against water and dust for any job site condition.

### **MULTI-LAYER SURFACE CONTACTS**

Multi-layer surface contacts within tool and battery are designed to take on high current demands.

### **RAPID OPTIMUM CHARGING SYSTEM**

XGT® Charger and Dual Cooling Fans digitally communicates before and during the charging process, evaluating battery condition to deliver a consistent fast charge. Charges LXT® batteries with adapter.





40V | 80V max

Learn More at  
[makitatools.com/XGT](https://makitatools.com/XGT)

1-1/8" D-HANDLE ROTARY HAMMER

UP TO **23% FASTER**  
DRILLING PERFORMANCE



GRH07M1W Shown



GRH01M1W Shown



Also Available:  
Dust Extractor Attachment with HEPA  
Filter Cleaning Mechanism (DX14)



**GRH07M1 / GRH07Z / GRH07M1W / GRH07ZW**

**40V max XGT® Brushless 1-1/8" AVT®  
(D-Handle) Rotary Hammer Kit, SDS-PLUS**

- Makita-built brushless motor delivers up to 23% faster drilling performance
- Up to 38% more holes per charge with XGT® 4.0Ah Battery
- Anti-Vibration Technology (AVT®) is designed to reduce vibration for increased comfort
- Active Feedback-Sensing Technology (AFT®) electronically turns off the motor if rotation of bit is suddenly forced to stop

GRH07M1W / GRH07ZW include Dust Extractor Attachment  
with HEPA Filter Cleaning Mechanism (DX15)



**GRH01M1 / GRH01Z / GRH01M1W / GRH01ZW**

**40V max XGT® Brushless  
1-1/8" AVT® Rotary Hammer Kit, SDS-PLUS**

- Makita-built brushless motor delivers the power performance required for heavy-load application
- Up to 135 of 3/8" holes using a fully charged 40V XGT® 4.0Ah battery
- Anti-Vibration Technology (AVT®) is an internal counterbalance system along with vibration-absorbing handles that work together to reduce vibration
- Active Feedback-Sensing Technology (AFT®) electronically turns off the motor if rotation of bit is suddenly forced to stop

GRH01M1W / GRH01ZW include Dust Extractor Attachment  
with HEPA Filter Cleaning Mechanism (DX12)



**GRH02M1 / GRH02Z**

**40V max XGT® Brushless 1-1/8" AVT®  
Rotary Hammer Kit, SDS-PLUS, with Interchangeable Chuck**

- Makita-built brushless motor delivers the power performance required for heavy-load application
- Up to 135 of 3/8" holes using a fully charged 40V XGT® 4.0Ah battery
- Anti-Vibration Technology (AVT®) is an internal counterbalance system along with vibration-absorbing handles that work together to reduce vibration
- Active Feedback-Sensing Technology (AFT®) electronically turns off the motor if rotation of bit is suddenly forced to stop
- Quick change chuck allows for interchangeability from SDS-PLUS to 1/2" keyless chuck for utilization of straight shank bits





Also Available:  
Dust Extraction Attachment Kit, SDS-MAX,  
Drilling and Demolition (196537-4)



## GRH05M1 / GRH05Z

**40V max XGT® Brushless**  
**1-9/16" AVT® Rotary Hammer Kit, SDS-MAX**

- Makita-built brushless motor along with 40V max XGT® Battery combine to deliver the power performance required for heavy-load application
- Active Feedback-Sensing Technology (AFT®) electronically turns off the motor if rotation of bit is suddenly forced to stop
- Extreme Protection Technology (XPT™) is engineered for improved dust and water resistance for operation in harsh conditions



Also Available:  
Dust Extraction Attachment Kit, SDS-MAX,  
Drilling and Demolition (196858-4)



## GRH06PM / GRH06Z

**80V max (40V max X2) XGT® Brushless**  
**2" AVT® Rotary Hammer Kit, SDS-MAX**

- Makita-built brushless motor along with two 40V max XGT® batteries combine to deliver up to 27% faster drilling performance than corded equivalent model
- Active Feedback-Sensing Technology (AFT®) electronically turns off the motor if rotation of bit is suddenly forced to stop
- Anti-Vibration Technology (AVT®) is an internal counterbalance system along with vibration-absorbing handles that work together to reduce vibration



Also Available:  
Dust Extraction Attachment,  
SDS-MAX, Demolition (196571-4)



## GMH01M1 / GMH01Z

**40V max XGT® Brushless**  
**15 lb. AVT® Demolition Hammer Kit, SDS-MAX**

- Makita-built brushless motor along with two 40V max XGT® Batteries combine to deliver up to 20% faster breaking efficiency than corded equivalent model
- Constant speed control automatically applies additional power under load for optimum performance
- Extreme Protection Technology (XPT™) is engineered for improved dust and water resistance for operation in harsh conditions



Also Available:  
Dust Extraction Attachment,  
SDS-MAX, Demolition (196571-4)



## GMH02PM / GMH02Z

**80V max (40V max X2) XGT® Brushless**  
**28 lb. AVT® Demolition Hammer Kit, SDS-MAX**

- Makita-built brushless motor along with two 40V max XGT® Batteries combine to deliver up to 15% faster breaking efficiency than corded equivalent model
- Constant speed control automatically applies additional power under load for optimum performance
- Anti-Vibration Technology (AVT®) is an internal counterbalance system along with vibration-absorbing handles that work together to reduce vibration

## ROTARY CARBIDE



**SDS-PLUS 3-Cutter Drill Bit**



**SDS-PLUS 2-Cutter Drill Bit**



**SDS-MAX 6-Cutter Drill Bit**



**SDS-MAX Dust Extraction Drill Bit**

## DEMOLITION STEEL



**751624-A // 4-1/2" x 17" Clay Spade, SDS-MAX**



**751228-A // 1" x 12" Flat Chisel, SDS-MAX**



**D-36522 // 3" x 12" Scaling Chisel, General Purpose, SDS-MAX**



**D-51150 // 3/4" x 10" Cold Chisel, SDS-PLUS**



**D-51144 // 10" Bull Point, SDS-PLUS**



**A-68161 // 4" Floor Scraper Blade and Assembly, SDS-PLUS**

## COMING SOON



### GECO1PL / GECO1PL4 / GECO1Z

**80V max (40V max X2) XGT® Brushless 14" Power Cutter Kit**

*GECO1PL4 includes (4) XGT® 8.0Ah Batteries*



### GRH08M1 / GRH08Z GRH08M1W / GRH08ZW

**40V max XGT® Brushless**  
**1-3/16" Rotary Hammer Kit**



### GRH09M1 / GRH09Z

**40V max XGT® Brushless**  
**1-3/16" Rotary Hammer Kit with QC Chuck**



### GRV01M1 / GRV01Z

**40V max XGT® Brushless**  
**5.6' Concrete Vibrator 1-1/4" Kit**



### GRV02M1 / GRV02Z

**40V max XGT® Brushless**  
**8' Concrete Vibrator 1-1/2" Kit**





40V | 80V max

Learn More at  
[makitatools.com/XGT](https://makitatools.com/XGT)



## ORBITAL RECIPRO SAW POWER OF A 15 AMP CORDED SAW

### NEW SPRING RELEASE



#### GRJ01M1 / GRJ01Z

##### 40V max XGT® Brushless Reciprocating Saw Kit

- Makita-built brushless motor delivers up to 35% faster cutting speed; 0-2,300 (Low) and 0-3,000 (High) strokes per minute
- The digital communication within XGT® optimizes performance to provide up to 2X longer sustained power under heavy-load applications
- Self-lubricating slider for increased durability



#### GRJ02M1 / GRJ02Z

##### 40V max XGT® Brushless AVT® Orbital Reciprocating Saw

- Delivers the Power of a 15 AMP Corded Reciprocating Saw
- Makita-built brushless motor delivers up to 40% faster cutting speed
- Anti-Vibration Technology (AVT®) is an internal counterbalance system delivers up to 50% less vibration
- On/Off Orbital feature provides more aggressive cuts in wood



**GSR02M1 / GSR02Z**

**40V max XGT® Brushless  
10-1/4" Rear Handle Saw Kit**

- Makita-built brushless motor delivers 4,000 RPM for up to 2X faster cutting than corded
- Extra Large 3-3/4" cutting capacity at 90°; cuts 4X material in a single pass
- Up to 150 cuts per charge in 4x4 SPF lumber on a single charge of a 4.0Ah battery
- Ergonomic design at only 13.3 lbs. up to 3.2 lbs. lighter than corded

**GSR01M1 / GSR01Z**

**40V max XGT® Brushless  
7-1/4" Rear Handle Saw Kit**

- Makita-built brushless motor delivers 6,400 RPM for faster cutting performance
- Large 2-9/16" cutting capacity at 90°; cuts 3X material in a single pass
- Up to 375 cuts per charge in 2x4 SPF lumber on a single charge of a 4.0Ah battery
- Improved ergonomic design at only 11.7 lbs. up to 1.5 lbs. less than corded

**GSH01M1 / GSH01Z**

**40V max XGT® Brushless  
7-1/4" Circular Saw Top Handle Kit**

- Makita-built brushless motor delivers 6,000 RPM for faster cutting performance
- Large 2-5/8" cutting capacity at 90°
- Dual L.E.D. lights illuminate the work area
- Compact and ergonomic design at only 12-1/2" long

**NEW SPRING RELEASE****GSH02M1 / GSH02Z**

**40V max XGT® Brushless 7-1/4" Circular Saw Kit,  
with Guide Rail Compatible Base, AWS®**

- Makita-built brushless motor delivers 6,000 RPM for faster cutting performance
- Large 2-3/8" cutting capacity at 90°
- Dual L.E.D. lights illuminate the work area
- Convenient guide rail compatible saw base interacts with optional guide rails to provide perfect, dead-on straight or bevel cutting without the need for an adapter

**GSH03Z**

**40V max XGT® Brushless 9-1/4" Circular Saw,  
with Guide Rail Compatible Base**

- Makita-built brushless motor delivers 4,000 RPM for faster cutting performance
- Large 3-3/8" cutting capacity at 90°
- Dual L.E.D. lights illuminate the work area
- Compact and ergonomic design at only 16-1/4" long

**GSH04Z**

**40V max XGT® Brushless 10-1/4" Circular Saw,  
with Guide Rail Compatible Base**

- Makita-built brushless motor delivers 3,500 RPM for faster cutting performance
- Large 3-13/16" cutting capacity at 90°
- Dual L.E.D. lights illuminate the work area
- Compact and ergonomic design at only 12-7/8" long

**GSL02M1 / GSL02Z**

**40V max XGT® Brushless  
8-1/2" Dual-Bevel Sliding Compound Miter Saw Kit**

- Makita-built brushless motor delivers 4,800 RPM for faster cutting performance
- Cutting capacity of 2-3/4" x 12-1/4" at 90°
- Miters 0-60° left and right, Bevels 0-48° left and right, with positive stops at 0°, 15°, 22.5°, 30°, 31.6°, 45°, and 60° left and right

**GSL03M1 / GSL03Z**

**40V max XGT® Brushless  
10" Dual-Bevel Sliding Compound Miter Saw Kit**

- Makita-built brushless motor delivers 3,600 RPM for faster cutting performance
- Large 2-13/16" x 12" cutting capacity at 90°; cuts up to 6-5/8" crown molding (vertically nested) and 5-1/4" baseboard (vertical)
- Miters 0-60° left and right, Bevels 0-48° left and right, with positive stops at 0°, 15°, 22.5°, 30°, 31.6°, 45°, and 60° left and right

**GSL04M1 / GSL04Z**

**40V max XGT® Brushless  
12" Dual-Bevel Sliding Compound Miter Saw Kit**

- Makita-built brushless motor delivers 3,600 RPM for faster cutting performance
- Extra large 3-5/8" x 15" cutting capacity at 90°; cuts up to 8" crown molding (vertically nested) and 6-3/4" baseboard (vertical)
- Miters 0-60° left and right, Bevels 0-48° left and right, with positive stops at 0°, 15°, 22.5°, 30°, 31.6°, 45°, and 60° left and right

**GPS01M1J / GPS01Z**

**40V max XGT® Brushless  
6-1/2" Plunge Circular Saw Kit**

- Makita-built brushless motor with variable speed control dial (2,500 - 4,900 RPM) for faster cutting performance
- Cutting capacity 2-3/16" at 90° and 1-9/16" at 45°
- Bevel capability (-1° to 48°) with positive stops at 22.5° and 45°

## GUIDE RAILS & CLAMP

COMPATIBLE WITH XGT® PLUNGE SAW

199140-0 // 39" Guide Rail

194368-5 // 55" Guide Rail

194367-7 // 118" Guide Rail

194385-5 // Guide Rail Clamp, 2/pk



Learn More at  
[makitatools.com/XGT](http://makitatools.com/XGT)



**4-1/2" / 5" ANGLE GRINDERS**

**13 AMP** CORDED  
**POWER**



Also Available:  
45° Clip-On Cut-Off Wheel  
Guard Cover (199710-5)



**GAG01M1 / GAG01Z**

**40V max XGT® Brushless 4-1/2" / 5"  
Angle Grinder Kit, with Electric Brake**

- Makita-built brushless motor along with 40V max XGT® Battery combine to deliver up to 60% faster cutting speed than predecessor models
- Electronic current limiter helps protect the motor from overload in high torque application
- Active Feedback-sensing Technology (AFT®) turns the motor off if rotation of the wheel is suddenly forced to stop
- Electric brake stops the grinding or cut-off wheel in 2 seconds or less for maximum productivity



Also Available:  
45° Clip-On Cut-Off Wheel  
Guard Cover (199710-5)



**GAG03M1 / GAG03Z**

**40V max XGT® Brushless 4-1/2" / 5" Paddle  
Switch Angle Grinder Kit, with Electric Brake**

- Makita-built brushless motor along with 40V max XGT® Battery combine to deliver up to 60% faster cutting speed than predecessor models
- Electronic current limiter helps protect the motor from overload in high torque application
- Active Feedback-sensing Technology (AFT®) turns the motor off if rotation of the wheel is suddenly forced to stop
- Electric brake stops the grinding or cut-off wheel in 2 seconds or less for maximum productivity



Also Available:  
4-1/2" / 5" Tool-Less Dust Extraction Surface Grinding Shroud (191F81-2)  
5" Tool-Less Dust Extraction Cutting/Tuck Point Guard (191G06-2)



**GAG04M1 / GAG04Z**

**40V max XGT® Brushless 4-1/2" / 5"  
Angle Grinder Kit, with Electric Brake**

- Makita-built brushless motor along with 40V max XGT® Battery combine to deliver up to 60% faster cutting speed than predecessor models
- Auto-start Wireless System (AWS™) utilizes Bluetooth® technology for wireless power-on/off communication between tool and dust extractor (AWS® Transmitter sold separately)
- Electronic current limiter helps protect the motor from overload in high torque application
- Variable speed control dial allows for RPM adjustment (3,000-8,500) to match the speed to the application



Also Available:  
4-1/2" / 5" Tool-Less Dust Extraction Surface Grinding Shroud (191F81-2)  
5" Tool-Less Dust Extraction Cutting/Tuck Point Guard (191G06-2)



**GAG06M1 / GAG06Z**

**40V max XGT® Brushless 4-1/2" / 5" Paddle  
Switch Angle Grinder Kit, with Electric Brake**

- Makita-built brushless motor along with 40V max XGT® Battery combine to deliver up to 60% faster cutting speed than predecessor models
- Auto-start Wireless System (AWS™) utilizes Bluetooth® technology for wireless power-on/off communication between tool and dust extractor (AWS® Transmitter sold separately)
- Electronic current limiter helps protect the motor from overload in high torque application
- Variable speed control dial allows for RPM adjustment (3,000-8,500) to match the speed to the application

**GAG07Z****40V max XGT® Brushless  
6" Angle Grinder Kit, with Electric Brake**

- Makita-built brushless motor along with 40V max XGT® Battery combine to deliver the power performance required for heavy-load application
- Active Feedback-sensing Technology (AFT®) turns the motor off if rotation of the wheel is suddenly forced to stop
- Electric brake stops the grinding or cut-off wheel in 2 seconds or less for maximum productivity
- Quick guard rotation allows easy tool-less adjustment for increased productivity

**GAG08Z****40V max XGT® Brushless 6" Paddle Switch  
Angle Grinder Kit, with Electric Brake**

- Makita-built brushless motor along with 40V max XGT® Battery combine to deliver the power performance required for heavy-load application
- Active Feedback-sensing Technology (AFT®) turns the motor off if rotation of the wheel is suddenly forced to stop
- Electric brake stops the grinding or cut-off wheel in 2 seconds or less for maximum productivity
- Quick guard rotation allows easy tool-less adjustment for increased productivity



Also Available:  
7" Dust Extraction Surface  
Grinding Shroud (195386-6)

**GAG10M1 / GAG10Z****40V max XGT® Brushless 7" / 9" Paddle  
Switch Angle Grinder Kit, with Electric Brake**

- Makita-built brushless motor along with a single 40V max XGT® Battery combine to deliver the power performance required for heavy-load application
- Electric brake stops the grinding or cut-off wheel in 2 seconds or less for maximum productivity
- Electronic current limiter helps protect the motor from overload in high torque application
- Automatic-start Wireless System (AWS™) utilizes Bluetooth® technology for wireless power-on/off communication between tool and dust extractor (AWS® Transmitter sold separately)

**NEW SPRING RELEASE****GBPD1M1 / GBPD1Z****40V max XGT® Brushless  
Deep Cut Portable Band Saw Kit**

- Makita-built brushless motor delivers up to 2X faster cutting
- Large 5" x 5" cutting Capacity; ideal for cutting multiple types of materials
- Built-in L.E.D. light illuminates the work area
- Anti-restart protection engineered to prevent motor start up when battery is inserted with switch locked on

**NEW SPRING RELEASE****GSCD1M1 / GSCD1Z****40V max XGT® Brushless 7-1/4"  
Metal Cutting Saw Kit, with Electric Brake and Chip Collector**

- Makita-built brushless motor delivers up to 2X faster cutting performance
- Large 2-5/8" cutting capacity
- Active Feedback-Sensing Technology (AFT®) electronically turns off the motor if rotation of bit is suddenly forced to stop
- Electric brake for maximum productivity

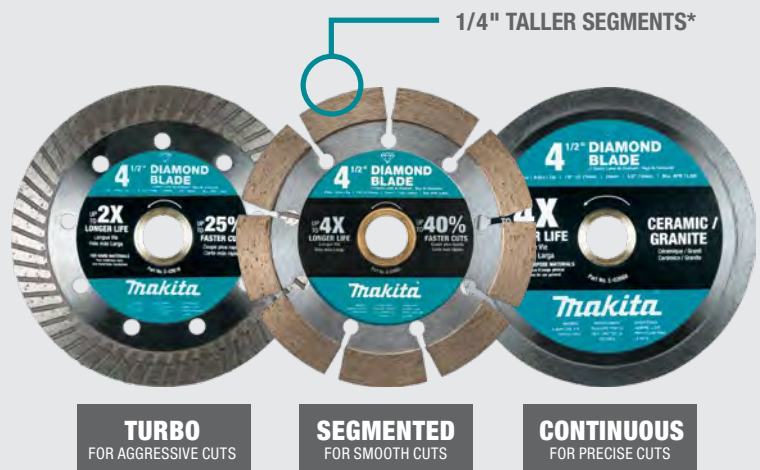
**COMING SOON****GAG11M1 / GAG11Z****40V max XGT® Brushless 4-1/2" / 5"  
X-Lock Angle Grinder Kit with Electric Brake****GAG13M1 / GAG13Z****40V max XGT® Brushless 4-1/2" / 5"  
X-Lock Paddle Switch Angle Grinder  
Kit with Electric Brake****DIAMOND BLADES**

UP TO **40% FASTER**\*

LAST UP TO **4X LONGER**\*

\*Than competitor Diamond Blades

Full Range Available at: [makitatools.com](http://makitatools.com)





Learn More at  
[makitatools.com/XGT](https://makitatools.com/XGT)



**1/2" 4-SPEED IMPACT WRENCH**

**810 FT.LBS.**  
**OF NUT-BUSTING TORQUE**





### GWT010 / GWT012

#### 40V max XGT® Brushless 4-Speed High-Torque 3/4" Sq. Drive Impact Wrench Kit, with Friction Ring Anvil

- Makita-built brushless motor delivers 1,510 ft.lbs. of Nut-Busting Torque and 1,330 ft.lbs. of Fastening Torque; out powers similar models in heavy load applications
- 3 forward and 3 reverse Auto-Stop modes for increased efficiency
- Full speed mode function reduces trigger pull to reach full speed
- 4-speed power selection switch for a wide range of applications
- Flexible joint isolates the battery from the grip to help reduce wear on the battery contacts
- Dual L.E.D. lights; one below the anvil and one on the tools foot for added illumination in low light environments



### GWT080 / GWT082

#### 40V max XGT® Brushless 4-Speed Mid-Torque 1/2" Sq. Drive Impact Wrench Kit, with Detent Anvil

- Makita-built motor delivers 810 ft.lbs. of Nut-Busting Torque and 560 ft.lbs. of Fastening Torque
- 3 forward and 3 reverse Auto-Stop modes for increased efficiency
- Full speed mode function reduces trigger pull to reach full speed
- 4-speed power selection switch for a wide range of applications
- Flexible joint isolates the battery from the grip to help reduce wear on the battery contacts



### GWT070 / GWT072

#### 40V max XGT® Brushless 4-Speed Mid-Torque 1/2" Sq. Drive Impact Wrench Kit, with Friction Ring Anvil

- Makita-built motor delivers 810 ft.lbs. of Nut-Busting Torque and 560 ft.lbs. of Fastening Torque
- 3 forward and 3 reverse Auto-Stop modes for increased efficiency
- Full speed mode function reduces trigger pull to reach full speed
- 4-speed power selection switch for a wide range of applications
- Flexible joint isolates the battery from the grip to help reduce wear on the battery contacts



### GWT040 / GWT042

#### 40V max XGT® Brushless 4-Speed 1/2" Sq. Drive Impact Wrench Kit, with Friction Ring Anvil

- Makita-built brushless motor delivers 465 ft.lbs. of Nut-Busting Torque and 260 ft.lbs. of Fastening Torque
- 3 forward and 3 reverse Auto-Stop modes for increased efficiency
- Full speed mode function reduces trigger pull to reach full speed
- 4-speed power selection switch for a wide range of applications
- Compact length at only 5-5/8"; ideal for working in tight spaces
- Ultra-smooth variable speed trigger provides optimum control



### GWT050 / GWT052

#### 40V max XGT® Brushless 4-Speed 1/2" Sq. Drive Impact Wrench Kit, with Detent Anvil

- Makita-built brushless motor delivers 465 ft.lbs. of Nut-Busting Torque and 260 ft.lbs. of Fastening Torque
- 3 forward and 3 reverse Auto-Stop modes for increased efficiency
- Full speed mode function reduces trigger pull to reach full speed
- 4-speed power selection switch for a wide range of applications
- Compact length at only 5-5/8"; ideal for working in tight spaces
- Ultra-smooth variable speed trigger provides optimum control



### GDT010 / GDT012

#### 40V max XGT® Brushless 4-Speed Impact Driver Kit

- Makita-built brushless motor delivers 1,950 in.lbs. of Max Torque; out powers similar models in heavy load applications
- 3 forward and 3 reverse Auto-Stop modes for increased efficiency
- Additional one-touch 4-speed power selector button under the chuck for added convenience
- Two Tightening Modes (T-mode) for faster tightening of self-drilling screws in thick or thin gauge metal; helps prevent damage to the screw or workpiece
- Compact length at only 4-3/4"; ideal for working in tight spaces
- Ultra-smooth variable speed trigger provides optimum control

## IMPACT SOCKETS



A-96372 // 14 Pc. 1/2" Drive Deep Well Impact Socket Set



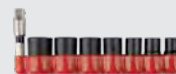
E-01672 // Impact XPS® 10 Pc. 3/8" Drive 6-Point SAE Impact Socket Set w/ Standard Socket Adapter



E-01703 // Impact XPS® 8 Pc. 1/4" Drive 6-Point SAE Impact Socket Set w/ Standard Socket Adapter



E-01698 // Impact XPS® 10 Pc. 3/8" Drive 6-Point Metric Impact Socket Set w/ Standard Socket Adapter



E-01694 // Impact XPS® 8 Pc. 1/4" Drive 6-Point Metric Impact Socket Set w/ Standard Socket Adapter

More Accessories Available at: [makitatools.com](http://makitatools.com)





40V | 80V max

Learn More at  
[makitatools.com/XGT](http://makitatools.com/XGT)



**1/2" HAMMER DRIVER-DRILL**

**MORE POWER  
AND CONTROL**





AFT™

**GFD01D / GFD01Z****40V max XGT® Brushless  
1/2" Driver-Drill Kit**

- Makita-built brushless motor delivers 1,250 in.lbs. of Max Torque; outpowers similar models in heavy load applications
- Electronic digital clutch accurately targets desired torque range (41 settings in low speed, 21 settings in high speed)
- XPT™ is engineered to provide increased dust and water resistance in harsh job site conditions
- Active Feedback-sensing Technology (AFT™) turns the motor off if rotation of the accessory is suddenly forced to stop
- Up to 35% faster drilling speed with 2 speed settings (0-650 & 0-2,600 RPM)
- Compact length at only 7-1/8"; ideal for working in tight spaces



AFT™

**GPH01D / GPH01Z****40V max XGT® Brushless  
1/2" Hammer Driver-Drill Kit**

- Makita-built brushless motor delivers 1,250 in.lbs. of Max Torque; outpowers similar models in heavy load applications
- Electronic digital clutch accurately targets desired torque range (41 settings in low speed, 21 settings in high speed)
- XPT™ is engineered to provide increased dust and water resistance in harsh job site conditions
- Active Feedback-sensing Technology (AFT™) turns the motor off if rotation of the accessory is suddenly forced to stop
- Up to 35% faster drilling speed with 2 speed settings (0-650 & 0-2,600 RPM) (0-9,750 & 0-39,000 BPM)\*
- Compact length at only 7-1/8"; ideal for working in tight spaces

\*Compared to XPH07

**GPH02D / GPH02Z****40V max XGT® Compact Brushless  
1/2" Hammer Driver-Drill Kit**

- Makita-built brushless motor delivers 585 in.lbs. of Max Torque
- 2 speed settings (0-550 & 0-2,200 RPM) (0-8,250 & 0-33,000 BPM)
- Ultra-smooth variable speed trigger provides optimum control
- Compact length at only 7-1/8"; ideal for working in tight spaces
- XPT™ is engineered to provide increased dust and water resistance in harsh job site conditions

**GFD02D / GFD02Z****40V max XGT® Compact Brushless  
1/2" Driver-Drill Kit**

- Makita-built brushless motor delivers 585 in.lbs. of Max Torque
- 2 speed settings (0-550 & 0-2,200 RPM)
- Ultra-smooth variable speed trigger provides optimum control
- Compact length at only 6-11/16"; ideal for working in tight spaces
- XPT™ is engineered to provide increased dust and water resistance in harsh job site conditions

**GAD01M1 / GAD01Z****40V max XGT® Brushless  
1/2" Right Angle Drill Kit**

- Makita-built brushless motor with two speed, variable speed (0-400 RPM and 0-1,500 RPM) for maximum efficiency and a wide range of drilling applications
- Drills up to 6-1/4" holes with hole saws and 4-5/8" holes with self feed bits
- Built-in L.E.D light with pre glow and afterglow illuminates the work area
- XPT™ is engineered to provide increased dust and water resistance in harsh job site conditions

**GAD02M1 / GAD02Z****40V max XGT® Brushless  
7/16" Hex Right Angle Drill Kit**

- Makita-built brushless motor with two speed, variable speed (0-400 RPM and 0-1,500 RPM) for maximum efficiency and a wide range of drilling applications
- Drills up to 6-1/4" holes with hole saws and 4-5/8" holes with self feed bits
- Uses 7/16" hex shank bits for drilling versatility
- Built-in L.E.D light with pre glow and afterglow illuminates the work area

**GT2000****40V max XGT® 2-Pc. Combo Kit****Includes:**

- 40V max XGT® Brushless 1/2" Hammer Driver-Drill (GPH01Z)
- 40V max XGT® Brushless 4-Speed Impact Driver (GDT01Z)
- (2) 40V max XGT® Lithium-Ion 2.5Ah Battery (BL4025)
- 40V max XGT® Lithium-Ion Rapid Optimum Charger (DC40RA)

**GT400M1D1****40V max XGT® 4-Pc. Combo Kit****Includes:**

- 40V max XGT® Brushless 1/2" Hammer Driver-Drill (GPH01Z)
- 40V max XGT® Brushless 4-Speed Impact Driver (GDT01Z)
- 40V max XGT® Brushless 7-1/4" Circular Saw Top Handle (GSH01Z)
- 40V max XGT® L.E.D. Flashlight (ML001G)
- 40V max XGT® Lithium-Ion 2.5Ah Battery (BL4025)
- 40V max XGT® Lithium-Ion 4.0Ah Battery (BL4040)
- 40V max XGT® Lithium-Ion Rapid Optimum Charger (DC40RA)

**GT401M1D1****40V max XGT® 4-Pc. Combo Kit****Includes:**

- 40V max XGT® Brushless 1/2" Hammer Driver-Drill (GPH01Z)
- 40V max XGT® Brushless 4-Speed Impact Driver (GDT01Z)
- 40V max XGT® Brushless 1-1/4" Reciprocating Saw (GRJ01Z)
- 40V max XGT® L.E.D. Flashlight (ML001G)
- 40V max XGT® Lithium-Ion 2.5Ah Battery (BL4025)
- 40V max XGT® Lithium-Ion 4.0Ah Battery (BL4040)
- 40V max XGT® Lithium-Ion Rapid Optimum Charger (DC40RA)





40V | 80V max

Learn More at  
[makitatools.com/XGT](https://makitatools.com/XGT)

## 17" STRING TRIMMER POWER OF A 30<sub>cc</sub> GAS STRING TRIMMER







**GRU01M1 / GRU01Z**  
40V max XGT® Brushless  
15" String Trimmer Kit

- Makita-built outer rotor brushless motor delivers the power of a 25cc gas string trimmer
- Rapid load bump & feed trimmer head line loads in seconds with 3 easy steps: align, feed and twist
- Up to 1 hour of run time with 40V XGT® 4.0Ah battery
- Automatic Torque Drive Technology mode automatically shifts from 3,500-6,500 RPM for extended run time or added power

## NEW SPRING RELEASE



**GRU02M1 / GRU02Z**  
40V max XGT® Brushless  
Brush Cutter Kit

- Makita-built brushless motor delivers the power of a 30cc gas brush cutter
- Bike handle design for improved grip and more ergonomic working position
- Steel drive shaft for less vibration and longer equipment life
- 9" steel 4 tooth brush cutter blade ideal for cutting grasses, shrubs and underwood
- Automatic Torque Drive Technology mode automatically shifts from 4,600-7,000 RPM for extended run time or added power

## NEW SPRING RELEASE



**GRU03M1 / GRU03Z**  
40V max XGT® Brushless  
17" String Trimmer Kit

- Makita-built brushless motor delivers the power of a 30cc gas string trimmer
- Brush cutter debris shield and loop handle equipped with barrier bar for compatibility with brush cutter blades
- Steel drive shaft for less vibration and longer equipment life
- Rapid load bump & feed trimmer head line loads in seconds with 3 easy steps: align, feed and twist
- Automatic Torque Drive Technology mode automatically shifts from 4,600-7,000 RPM for extended run time or added power

## NEW SPRING RELEASE



**GRU04M1 / GRU04Z**  
40V max XGT® Brushless  
17" String Trimmer Kit

- Makita-built brushless motor delivers the power of a 30cc gas string trimmer
- Narrow string trimmer guard for improved cutting visibility
- Steel drive shaft for less vibration and longer equipment life
- Rapid load bump & feed trimmer head line loads in seconds with 3 easy steps: align, feed and twist
- Automatic Torque Drive Technology mode automatically shifts from 4,000-6,000 RPM for extended run time or added power

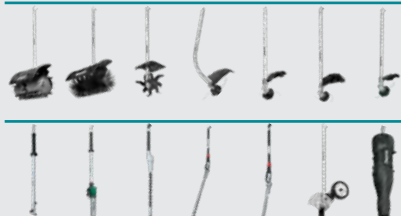


**GUX01JM1X1 / GUX01Z1X1 / GUX01Z**  
40V max XGT® Brushless Couple Shaft Power  
Head Kit, with 17" String Trimmer Attachment

- Makita-built brushless motor delivers power of 30cc gas string trimmer
- Up to 25% more power than gas couple shaft power head\*
- 3-speed options (Low: 4,200 RPM, Medium: 6,000 RPM, High: 7,100 RPM) for power and run time management
- Variable speed trigger for controlled cutting speed
- Lever-Style Lock System allows for quick tool-less installation and replacement of attachments

\*Compared to EX2650LH

COMPATIBLE WITH  
**14 COUPLE SHAFT  
ATTACHMENTS**



More Accessories Available at: [makitatools.com/OPE](http://makitatools.com/OPE)



**GHU01M1 / GHU01Z**  
40V max XGT® Brushless  
24" Rough Cut Hedge Trimmer Kit

- Makita-built brushless motor delivers the power of a 22.7cc gas hedge trimmer
- 5-position rotating rear handle for increased comfort during vertical and angle trimming
- 24" dual action double-sided sharp-edged shear blade with curved 3-sided teeth provides optimal trimming for thick and hard branches
- Up to 3 hours of run time using a 40V max XGT® 4.0Ah battery
- Up to 33% more torque than gas for cutting thick branches

## NEW SPRING RELEASE



**GHU02M1 / GHU02Z**  
40V max XGT® Brushless  
24" Hedge Trimmer Kit

- Makita-built brushless motor delivers the power of a 22.7cc gas hedge trimmer
- 5-position rotating rear handle for increased comfort during vertical and angle trimming
- 24" dual action double-sided shear blade with 3-sided teeth for clean cuts
- Up to 6 hours of run time using a 40V max XGT® 4.0Ah battery
- Up to 16% more torque than gas for cutting thick branches

## NEW SPRING RELEASE



**GHU03M1 / GHU03Z**  
40V max XGT® Brushless  
30" Hedge Trimmer Kit

- Makita-built brushless motor delivers the power of a 22.7cc gas hedge trimmer
- 5-position rotating rear handle for increased comfort during vertical and angle trimming
- 30" dual action double-sided shear blade with 3-sided teeth for clean cuts
- Up to 4 hours of run time using a 40V max XGT® 4.0Ah battery
- Up to 16% more torque than gas for cutting thick branches

## NEW SPRING RELEASE



**GHU04M1 / GHU04Z**  
40V max XGT® Brushless  
24" Single-Sided Hedge Trimmer Kit

- Makita-built brushless motor delivers the power of a 22.7cc gas hedge trimmer
- 24" single-sided shear blade for commercial jobs
- Bevel-tipped, curved 3-sided teeth easily catch and hold branches for clean cuts with reduced friction
- Up to 6 hours of run time using a 40V XGT® 4.0Ah battery
- Up to 13% more torque than gas for cutting thick branches

## NEW SPRING RELEASE



**GHU05M1 / GHU05Z**  
40V max XGT® Brushless  
30" Single-Sided Hedge Trimmer Kit

- Makita-built brushless motor delivers the power of a 22.7cc gas hedge trimmer
- 30" single-sided shear blade for commercial jobs
- Bevel-tipped, curved 3-sided teeth easily catch and hold branches for clean cuts with reduced friction
- Up to 6 hours of run time using a 40V XGT® 4.0Ah battery
- Up to 13% more torque than gas for cutting thick branches

## COMING SOON



**GRU05PM / GRU05Z**  
80V max (40V max X2) XGT®  
Brushless Brush Cutter Kit



Learn More at  
[makitatools.com/XGT](https://makitatools.com/XGT)

**18" CHAIN SAW**  
**POWER OF A 42<sub>cc</sub>**  
**GAS CHAIN SAW**





## GBU01M1 / GBU01Z

### 40V max XGT® Brushless Blower Kit

- Up to 44% more blowing force than a 24.5cc gas blower
- Makita-built brushless motor delivers up to 565 CFM and 143 MPH
- Turbo boost mode delivers 565 CFM for heavy debris
- Cruise control lever with variable speed trigger adjusts between 0 - 476 CFM for power and run time management
- 3-stage telescoping long nozzle for user convenience



## EGDO1M1 / EGDO1Z

### 40V max XGT® Brushless Earth Auger Kit

- Makita-built brushless Motor delivers power of a 36cc gas earth auger
- Automatic Speed Change™ technology adjusts drill speed and torque during drilling
- Drill holes up to 8" wide and 41" deep (extension bar, auger bit and blades sold separately)
- 2 speed options (Low: 0-400 RPM, High: 0-1,500 RPM) for power and run time management
- XPT™ is engineered to provide increased dust and water resistance in harsh job site conditions
- High performance digging with even and consistent holes for landscaping, construction and soil sampling

\*Auger Drill Bit Sold Separately

## NEW SPRING RELEASE



## AFT™

## GAU01M1 / GAU01Z

### 40V max XGT® Brushless 10" Pole Saw Kit, 8' Length

- Makita-built brushless motor delivers the power of a 35cc gas pole saw
- Up to 30% faster than gas
- Up to 150 cuts in 4x4 cedar with 40V XGT® 4.0Ah battery
- 8 foot fixed length for extended reach
- Active Feedback-Sensing Technology (AFT™) electronically turns off the motor if rotation of the attachment is suddenly forced to stop

## NEW SPRING RELEASE



## AFT™

## GAU02M1 / GAU02Z

### 40V max XGT® Brushless 10" Telescoping Pole Saw Kit, 13' Length

- Makita-built brushless motor delivers the power of a 35cc gas pole saw
- Up to 30% faster than gas
- Up to 150 cuts in 4x4 cedar with 40V XGT® 4.0Ah battery
- Telescoping shaft easily adjusts length from 9 ft. to 13 ft. allowing access to hard-to-reach branches
- Active Feedback-Sensing Technology (AFT™) electronically turns off the motor if rotation of the attachment is suddenly forced to stop

# CONNECTX™

## COMMERCIAL OUTPUT



HIGHER  
CAPACITY



LONGER  
RUN TIME



ULTIMATE  
COMPATIBILITY



DURABLE  
DESIGN

## HIGH CAPACITY FOR LONGER RUN-TIME AND ALL-DAY WORK\*



## PDC1200A01

ConnectX™ 1,200Wh Portable Backpack Power Supply



## 191N62-4

40V max XGT® Adapter



\*Expected run times may vary by product, application, and workday amount

## COMING SOON



## GCU05M1 / GCU05Z

40V max XGT® Brushless 16" Chain Saw Kit



## GCU04T1 / GCU04Z

40V max XGT® Brushless 18" Chain Saw Kit



## GCU06T1 / GCU06Z

40V max XGT® Brushless 18" Chain Saw Kit



## GCU01M1 / GCU01Z

40V max XGT® Brushless 12" Top Handle Chain Saw Kit



## GCU02M1 / GCU02Z

40V max XGT® Brushless 14" Top Handle Chain Saw Kit



## GCU03M1 / GCU03Z

40V max XGT® Brushless 16" Top Handle Chain Saw Kit



Learn More at  
[makitatools.com/XGT](https://makitatools.com/XGT)

**4-SPEED COMPACT VACUUM**

OVER

**2X MORE  
SUCTION POWER**

WITH 42 CFM & 84" STATIC WATER LIFT



**G4001M1 / G4001R1 / G4001Z**  
40V max XGT® Brushless  
4-Speed HEPA Filter Compact Vacuum Kit

- Over 2X more suction power with 42 CFM and 84" static water lift
- Bagless canister for quick debris disposal
- Efficient two stage HEPA filter captures 99.97% of particulates .3 microns and larger extending the life of the main filter
- Up to 128 minutes of run time using a 40V max XGT® 4.0Ah Battery
- Compact and ergonomic design for operator comfort

## NEW SPRING RELEASE



**G4002R1 / G4002Z**  
40V max XGT® Brushless  
4-Speed Compact Vacuum Kit, w/ Dust Bag

- Over 2X more suction power with 42 CFM and 84" static water lift
- Accepts disposable paper or cloth dust bag for dust-free debris disposal
- Up to 64 minutes of run time using a 40V max XGT® 2.0Ah Battery
- Compact and ergonomic design for operator comfort

## NEW SPRING RELEASE



**G4001PM / G4001Z**  
40V max XGT® Brushless  
2.1 Gallon Wet/Dry Dust Extractor/Vacuum Kit

- Wet and dry pickup for versatility of applications
- Over 2X more suction power with 148 CFM and 92" water lift
- 2X more run time with 2 bay battery system
- Equipped with anti-static hose (1-1/4" x 5-1/2"), aluminum telescoping wand and 11" floor nozzle for janitorial and construction applications

## NEW SPRING RELEASE



**G4002PMU / G4002ZU / G4002PMX / G4002ZX**  
40V max XGT® Brushless  
2.1 Gallon HEPA Filter Dry Dust Extractor Kit, AWS®

- Auto-start Wireless System (AWS®) utilizes Bluetooth® technology for wireless power-on/off communication between tool and dust extractor
- Over 2X more suction power with 148 CFM and 92" water lift
- 2X more run time with 2 bay battery system
- Efficient three stage HEPA filtration system captures 99.97% of particulates .3 microns and larger

G4002PMX / G4002ZX are AWS® Capable  
(Auto-Start Wireless Transmitter sold separately)

## COMPACT VACUUM ATTACHMENTS

### INCREASE FILTER LIFE

CAPTURE 90% OF DUST PARTICLES BEFORE ENTERING THE MAIN CANISTER / DUST BAG



**191D72-1 // Black Cyclonic Vacuum Attachment w/ Lock**



**191D70-5 // White Cyclonic Vacuum Attachment w/ Lock**

## CANISTER VACUUM FILTER DUST BAGS

### CONVENIENT DUST COLLECTION

EASIER CLEANUP AND QUICK DEBRIS DISPOSAL



**A-48430 // Filter Dust Bag for 2.1 Gallon Canister Vacuum/Extractors, 5/pk**



**195557-5 // Filter Dust Bag for 4 Gallon Canister Vacuum/Extractors, 5/pk**

## AWS® CANISTER & BACKPACK MODELS

### WIRELESS TOOL CONNECTION

UTILIZES BLUETOOTH® TECHNOLOGY FOR WIRELESS POWER-ON/OFF COMMUNICATION BETWEEN TOOL AND DUST EXTRACTOR



**198901-5 // Auto-start Wireless Transmitter**

## COMING SOON



**G4003R1 / G4003Z**  
40V max XGT® Brushless  
Cyclonic Compact Vacuum Kit



**G4003PM / G4003Z**  
40V max XGT® Brushless  
4 Gallon Wet/Dry Dust Extractor/Vacuum Kit



**G4004MUX / G4004ZUX**  
40V max XGT® Brushless  
4 Gallon HEPA Filter Dry Dust Extractor Kit, AWS®

G4004PMX / G4004ZX are AWS® Capable  
(Auto-Start Wireless Transmitter sold separately)



**G4005T1X / G4005ZX**  
40V max XGT® Brushless  
1/2 Gallon HEPA Filter Backpack Dry Vacuum Kit



**G4006T1 / G4006Z**  
40V max XGT® Brushless  
1/2 Gal. HEPA Filter Backpack Dust Extractor Kit, AWS® Capable

G4006T1 / G4006Z are AWS® Capable  
(Auto-Start Wireless Transmitter sold separately)



Learn More at  
[makitatools.com/XGT](https://makitatools.com/XGT)



**13" CORDLESS FAN**

UP  
TO

**740 CFM**  
**ON HIGH SETTING**

**CF001GZ****40V max XGT® 9-1/4" Fan**

- Powerful motor delivers up to 290 CFM on high setting
- Up to 19 hours of continuous run time in Low speed with 40V max XGT® 4.0Ah Battery (battery not included)
- Three speed settings (High/Medium/Low) and Oscillation selector for optimal air velocity and control. Automatically oscillates 45° right and left
- Manually tilts 90° up and 45° down for convenient redirection of airflow

**CF002GZ****40V max XGT® 13" Fan**

- Powerful motor delivers up to 740 CFM on high setting
- Up to 17 hours of continuous run time in Low speed with 40V max XGT® 4.0Ah Battery (battery not included)
- Three speed settings (High/Medium/Low) and Oscillation selector for optimal air velocity and control. Automatically oscillates 45° right and left
- Quiet operation at 52 dBA

**GRM01****40V max XGT® Job Site Radio**

- Menu controls to set AM/FM, mono/stereo, clock settings, volume, and snooze
- One auxiliary port for MP3 compatibility and one USB port for charging your mobile device
- Delivers rich, full stereo sound from two powerful 3.5" side-firing speakers
- Compatible with 12V max CXT®, 18V LXT®, and 40V max XGT® batteries

**GRM02****40V max XGT® Bluetooth® Job Site Radio**

- Equipped with Bluetooth® to wirelessly connect your mobile device to play music
- Menu controls to set FM mono/stereo, clock settings, volume and snooze
- One auxiliary port for MP3 compatibility and one USB port for charging your mobile device
- Delivers rich, full stereo sound from two powerful 3.5" side-firing speakers

**GRM03****40V max XGT® Premium Bluetooth® Job Site Radio**

- Premium sound quality for an enhanced audio experience
- Equipped with Bluetooth® to wirelessly connect your mobile device to play music
- Menu controls to set FM mono/stereo, clock settings, volume and snooze
- One auxiliary port for MP3 compatibility and one USB port for charging your mobile device

**M1001G****40V max XGT® L.E.D. Flashlight**

- 34 hours run time using BL4025; 55 hours run time using BL4040
- High-luminance 4 L.E.D. flashlight provides 160 lumens
- 170° pivoting head with 12 positive stops

**M1002G****40V max XGT® L.E.D. Lantern/Flashlight**

- 32 hours run time using BL4025; 51 hours runtime using BL4040
- 3 stage brightness for accurately positioned illumination
- Built-in USB port for charging portable electronic devices
- 360° lantern mode provides 710 lumens; 180° lantern mode provides 340 lumens; flashlight mode provides 130 lumens

**M1006G****40V max XGT® 18 L.E.D. Flashlight**

- High-luminance 18 L.E.D. flashlight provides 500 lumens on high
- 3-mode operation: delivers 500 lumens on High, 250 lumens on Medium, and 100 lumens on Low
- Flashlight head folds up and down with 7 positive stops and rotates left to right for multiple lighting angles
- Up to 82 hours of illumination with 4.0Ah 40V max XGT® Battery (battery sold separately)

**M1003G****40V max XGT® Flood Light**

- 2-mode operation: delivers 1,100 lumens on High and 450 lumens on Low
- Up to 22 hour of run time using BL4040
- Compatible with Makita® 40V max XGT® and 18V LXT® batteries
- Dust and water-resistant construction (IP65 rated) for improved operation in harsh job site conditions

**MP001GZ01****40V max XGT® High-Pressure Inflator**

- Powerful high volume pump for faster inflation, delivers up to 160 PSI
- Easily inflates vehicle tires, bicycle tires, sports balls, and more
- Auto-stop function automatically stops inflation when preset air pressure is reached to prevent overfill

**ADP001G****40V max XGT® Power Source**

- 2 USB ports provide quick and easy charging
- 2.4A output from each USB port, 4.8A total output when both USB ports are connected
- Auto-off turns off the USB output power after 30 minutes
- L.E.D. on/off button turns green while in use for operator convenience

**COMING SOON****M1005G****40V max XGT® L.E.D. Work Light****M1007G****40V max XGT® L.E.D. Flashlight/Spotlight**



**NEW SPRING RELEASE**



**GSA01Z**

**40V max XGT® Brushless High Speed Dust Blower**

- Makita-built brushless motor delivers up to 447 MPH and 39 CFM
- 4 digitally controlled speeds for a wide range of applications
- 5 nozzles included for a wide range of applications
- Up to 50 minutes of run time with 40V XGT® 2.5Ah battery

**NEW SPRING RELEASE**



**GTR01D1 / GTR01Z**

**40V max XGT® Brushless Compact Router Kit**

- Makita-built brushless motor delivers up to 1.5 HP
- Variable speed control dial (10,000 - 31,000 RPM) to match the speed to the application
- Electronic speed control maintains constant speed under load
- On/Off button with separate lock button

**NEW SPRING RELEASE**



**GTP01D1 / GTP01Z**

**40V max XGT® Brushless 23 Gauge Pin Nailer Kit**

- Makita-built brushless motor delivers up to 15% faster firing
- Refined firing mechanism reduces recoil; reduces force required on the work surface when driving pin nails
- Max magazine capacity up to 120 pin nails
- Narrow nose design allows easy nailing access in confined areas

**NEW SPRING RELEASE**



**GVP01M1 / GVP01Z**

**40V max XGT® Brushless 7" Polisher/Sander Kit**

- Cordless solution for a variety of polishing applications where mobility is important
- Variable speed dial and trigger (0-2,200 RPM) enables user to match the speed to the application
- Rubberized over molding on the tool and battery position are designed to help protect delicate surfaces from potential damage
- Weighs only 7.7 lbs. with battery for reduced operator fatigue

**COMING SOON**



**GPK01M1 / GPK01Z**

**40V max XGT® Brushless Planer Kit**

# MORE VOLTAGE

IN THE PREFERRED 18V FORM FACTOR



**FASTER CHARGING**  
TO GET WORK DONE FASTER

2.5Ah **28 MIN**

4.0Ah **45 MIN**

5.0Ah **50 MIN**

**HIGHER OUTPUT POWER**  
**~25% LONGER RUN TIME**



**50 Minute Charge Time**

#### BL4050F

##### 40V max XGT® Lithium-Ion 5.0Ah Battery

- Reaches full charge in 50 minutes
- Enhanced cooling system is engineered to maximize battery life
- XGT® Batteries features an advanced design impact-resistant outer case
- and shock-absorbing inner-liner engineered to protect the battery in harsh jobsite environments
- The digital communication within XGT® optimizes performance to provide up to 2X longer sustained power under heavy-load applications



**45 Minute Charge Time**

#### BL4040

##### 40V max XGT® Lithium-Ion 4.0Ah Battery

- Reaches full charge in 45 minutes
- XGT® Batteries features an advanced design impact-resistant outer case
- and shock-absorbing inner-liner engineered to protect the battery in harsh jobsite environments
- The digital communication within XGT® optimizes performance to provide up to 2X longer sustained power under heavy-load applications



**28 Minute Charge Time**

#### BL4025

##### 40V max XGT® Lithium-Ion 2.5Ah Battery

- Reaches full charge in 28 minutes
- XGT® Batteries features an advanced design impact-resistant outer case
- and shock-absorbing inner-liner engineered to protect the battery in harsh jobsite environments
- The digital communication within XGT® optimizes performance to provide up to 2X longer sustained power under heavy-load applications



#### DC40RA

##### 40V max XGT® Lithium-Ion Rapid Optimum Charger

- The XGT® Rapid Charger with dual-fan design circulates air through the battery to cool the battery and circuit board quickly for faster charging
- The XGT® Rapid Charger's built-in chip thoroughly communicates during the charging process to control current, voltage, and temperature for more efficient charging
- The XGT® Rapid Charger's digital display indicates battery charge level (-80%, +80%, 100%)



#### DC40RB

##### 40V max XGT® Dual Port Rapid Optimum Charger

- The XGT® Rapid Charger with three fan design circulates cooling air through the batteries and circuit board quickly for faster charging
- The XGT® Rapid Charger's built-in chip thoroughly communicates during the charging process to control current, voltage, and temperature for more efficient charging
- The XGT® Rapid Charger's digital display indicates battery charge level (-80%, +80%, 100%)



#### ADP10

##### 40V max XGT® to 18V LXT® Adapter for DC40RA Charger

- Adapts 40V max XGT® Chargers to charge 18V LXT® Batteries (batteries not included)
- Charges an 18V LXT® Lithium-Ion 6.0Ah Battery in only 40 minutes
- Charges an 18V LXT® Compact Lithium-Ion 2.0Ah Battery in only 24 minutes

COMING SOON



**76 Minute Charge Time**

#### BL4080F

##### 40V max XGT® Lithium-Ion 8.0Ah Battery

**HIGHER OUTPUT POWER**  
**UP TO 2X LONGER RUN TIME**

**COMPATIBILITY**  
**CHARGES BOTH**  
**XGT® & LXT® BATTERIES**



Use adapter ADP10 with charger DC40RA to rapid charge 18V LXT® Batteries.





BEYOND LIMITS

40V | 80V max



The MAKITA® TEAL COLOR is the trade dress of Makita Corporation and is protected under common law and registered with the U.S. Patent and Trademark Office. Printed in U.S.A. 999BR051 XGT-0322-9,750 MA-11189-22