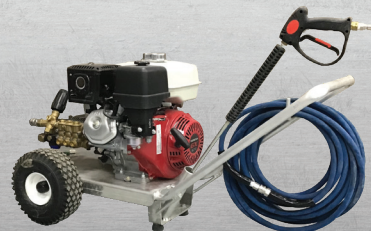


STOLL Bros. Lumber, Inc.



RENTAL



CORN PRO 30' GOOSENECK TRAILER W/ RAMPS #15

SPECS

Ball	2 5/16" Gooseneck
Payload	14,000 lbs

PRICE

EXCISE Tax	2.25%
1 Day-Minimum (12 Business Hrs.)	\$100
3 Day	\$200
1 Week	\$350

*O



NOTES
\$50 per day when hauling any of our compatible Rental Equipment

CORN PRO BIG TILT TRAILER #36

SPECS

Winch	
Ball	2 5/16"
Payload	10,000 lbs
Deck Size	81 1/2" x 21'

PRICE

EXCISE Tax	2.25%
1 Day-Minimum (12 Business Hrs.)	\$70
3 Day	\$140
1 Week	\$245

*O



NOTES
\$35 per day when hauling any of our compatible Rental Equipment

EZ HAUL 18' TRAILER W/ RAMPS #73

SPECS

Ball	2 5/16"
Payload	7,500 lbs

PRICE

EXCISE Tax	2.25%
1 Day-Minimum (12 Business Hrs.)	\$60
3 Day	\$120
1 Week	\$210

*L



NOTES
\$30 per day when hauling any of our compatible Rental Equipment

CORN PRO 16' TRAILER W/ RAMPS #63

SPECS

Ball	2 5/16"
Payload	10,000 lbs

PRICE

EXCISE Tax	2.25%
1 Day-Minimum (12 Business Hrs.)	\$60
3 Day	\$120
1 Week	\$210



*0

NOTES

\$30 per day when hauling any of our compatible Rental Equipment

SURE TRAC SMALL TILT TRAILER #50

SPECS

Ball	2 5/16"
Payload	4000 lbs
Deck Size	62" x 10' 8"

PRICE

EXCISE Tax	2.25%
1 Day-Minimum (12 Business Hrs.)	\$40
3 Day	\$80
1 Week	\$140



NOTES

\$20 per day when hauling any of our compatible Rental Equipment

*0

SURE TRAC 12' DUMP TRAILER #59

SPECS

Ball	2 5/16"
Payload	10,000 lbs

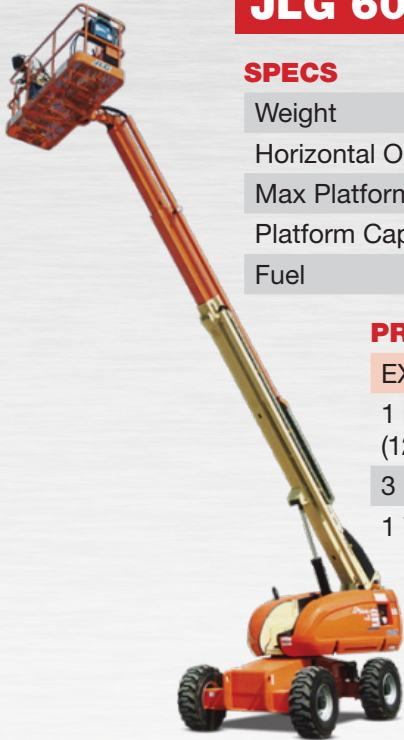
PRICE

EXCISE Tax	2.25%
1 Day-Minimum (12 Business Hrs.)	\$100
3 Day	\$200
1 Week	\$350



NOTES

\$50 per day when hauling any of our compatible Rental Equipment



JLG 600S MANLIFT

SPECS

Weight	22,000 LBS
Horizontal Outreach	50' 2"
Max Platform Height	59' 8"
Platform Capacity	600 LBS
Fuel	Diesel

PRICE

EXCISE Tax	2.25%
1 Day-Minimum (12 Business Hrs.)	\$350
3 Day	\$700
1 Week	\$1,225

*Fuel and/or Cleaning charges will be applied at our discretion

NOTES

Delivery within a 20 mile radius is \$100 ONE WAY, \$200 delivered and picked up. \$2.50 per mile for anything further than 20 miles. Two safety harnesses will be provided.

NIFTYLIFT TM50 TOWABLE MANLIFT

SPECS

Platform Height	49' 6"
Working Outreach	28' 6"
Safe Working Load	440 lbs.
Machine Weight	4,890 lbs.
Ball Size	2"

PRICE

EXCISE Tax	2.25%
Minimum (4 Business Hrs.)	\$175
1 Day (12 Business Hrs.)	\$250
3 Day	\$500
1 Week	\$875

*Fuel and/or Cleaning charges will be applied at our discretion



NOTES

Delivery within a 15 mile radius is \$50 ONE WAY, \$100 delivered and picked up. \$1.75 per mile for anything further than 15 miles.

NEW HOLLAND LM 5080 TELEHANDLER

SPECS

Weight	17,526 LBS
Lift Capacity	7,275 LBS
ROPS Only	(No Cab)
Max lift height	31.5ft
Fuel	Diesel

PRICE

EXCISE Tax	2.25%
1 Day-Minimum (12 Business Hrs.)	\$350
3 Day	\$700
1 Week	\$1,225

*Fuel and/or Cleaning charges will be applied at our discretion

NOTES

Delivery within a 20 mile radius is \$100 ONE WAY, \$200 delivered and picked up. \$2.50 per mile for anything further than 20 miles.



SKYJACK 4626 SCISSOR LIFT

SPECS

Weight	4,700 LBS
Max Platform Height	26'
Platform Inside Dimensions	42" x 84" plus 48" ext
Platform Capacity	700 LBS
Fuel	Electric

NOT All Terrain Concrete Only

PRICE

EXCISE Tax	2.25%
1 Day-Minimum (12 Business Hrs.)	\$150
3 Day	\$300
1 Week	\$525

*O

*Fuel and/or Cleaning charges will be applied at our discretion

NOTES

Delivery within a 15 mile radius is \$50 ONE WAY, \$100 delivered and picked up. \$1.75 per mile for anything further then 15 miles. Compatible with Big Tilt Trailer #36 (\$20 per day)



SKYJACK 3226 SCISSOR LIFT

SPECS

Weight	3,510 LBS
Max Platform Height	26'
Platform Inside Dimensions	28"x84" plus 36" ext.
Platform Capacity	600 LBS
NOT All Terrain Concrete Only	

PRICE

EXCISE Tax	2.25%
1 Day-Minimum (12 Business Hrs.)	\$150
3 Day	\$300
1 Week	\$525

*O

*Fuel and/or Cleaning charges will be applied at our discretion

NOTES

Delivery within a 15 mile radius is \$50 ONE WAY, \$100 delivered and picked up. \$1.75 per mile for anything further then 15 miles. Compatible with Tilt Trailer #50 (\$20 per day)

NEW HOLLAND E35B MINI EXCAVATOR

SPECS

Weight	7,500 LBS
Buckets	12", 18", 24"
Open Cab	
Fuel	Diesel

PRICE

EXCISE Tax	2.25%
\$60	per Hr
\$120	Daily Minimum (2 Hrs)

***L**

*Fuel and/or Cleaning charges will be applied at our discretion



NOTES

Delivery within a 15 mile radius is \$50 ONE WAY, \$100 delivered and picked up. \$1.75 per mile for anything further then 15 miles. Compatible with Big Tilt Trailer #36 (\$30 per day)

BOBCAT E42 MINI EXCAVATOR

SPECS

Horsepower	42.6 HP
Weight	9,500 LBS
Buckets	18", 24" & 24" Smooth
Open Cab	
Fuel	Diesel

PRICE

EXCISE Tax	2.25%
\$80	per Hr
\$160	Daily Minimum (2 Hrs)

***O**

*Fuel and/or Cleaning charges will be applied at our discretion



NOTES

Delivery within a 15 mile radius is \$50 ONE WAY, \$100 delivered and picked up. \$1.75 per mile for anything further then 15 miles. Compatible with Big Tilt Trailer #36 (\$30 per day)

SKID SKEER ATTACHMENTS

88" GRAPPLE BUCKET
SWEET STEER LAF5287-9783

EXCISE Tax	2.25%
1 Day-Minimum (12 Business Hrs.)	\$120
3 Day	\$240
1 Week	\$420



*0

SKID STEER POST DRIVER & BREAKER HAMMER
LAWSEN DUAL L-75C

EXCISE Tax	2.25%
1 Day-Minimum (12 Business Hrs.)	\$150
3 Day	\$300
1 Week	\$525



*0

SKID STEER ANGLE BROOM 10'

EXCISE Tax	2.25%
1 Day-Minimum (12 Business Hrs.)	\$120
3 Day	\$240
1 Week	\$420



*0

SKID STEER AUGER
LOWE BP-210H

EXCISE Tax	2.25%
1 Day-Minimum (12 Business Hrs.)	\$120
3 Day	\$240
1 Week	\$420



*0

NOTES
9" & 12" Augers Available

STONE WOLFPAC 3100 ROLLER



SPECS

Weight	2400 LBS
36" Wide Drums	
Front Drum Vibrating	
Fuel	Gasoline

PRICE

EXCISE Tax	2.25%
\$50	per Hr
\$100	Daily Minimum (2 Hrs)

*Fuel and/or Cleaning charges will be applied at our discretion

NOTES
Delivery within a 15 mile radius is \$50 ONE WAY, \$100 delivered and picked up. \$1.75 per mile for anything further then 15 miles. Compatible with Tilt Trailer #50 (\$20 per day)

D.A. HOCHSTETLER & SONS RELIABLE GRADER



SPECS

Width	84"
-------	-----

PRICE

EXCISE Tax	2.25%
1 Day-Minimum (12 Business Hrs.)	\$150
3 Day	\$300
1 Week	\$525

*0

VERMEER RTX250 TRENCHER

SPECS		PRICE	
Tracks	Not Wheels	EXCISE Tax	2.25%
Weight	1,800 LBS	\$70	per Hr
"4" x 36" Trench		\$140	Daily Minimum (2 Hrs)
Backfill Blade			
Fuel	Gasoline		



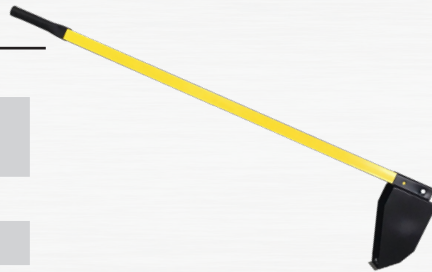
*Fuel and/or Cleaning charges will be applied at our discretion

NOTES

Delivery within a 15 mile radius is \$50 ONE WAY, \$100 delivered and picked up. \$1.75 per mile for anything further than 15 miles. Compatible with Tilt Trailer #50 (\$20 per day)

BOTTOM DIGGER SHOVEL

PRICE	
1 Day-Minimum (12 Business Hrs.)	\$20
3 Day	\$40
1 Week	\$70



BARRETO 2324RTKH TRENCHER

SPECS		PRICE	
Tracks	Not Wheels	EXCISE Tax	2.25%
Weight	1,800 LBS	\$80	per Hr
4" x 48" Trench		\$160	Daily Minimum (2 Hrs)
Backfill Blade			
Fuel	Gasoline		



*Fuel and/or Cleaning charges will be applied at our discretion

NOTES

Delivery within a 15 mile radius is \$50 ONE WAY, \$100 delivered and picked up. \$1.75 per mile for anything further than 15 miles. Compatible with Tilt Trailer #50 (\$20 per day)

VERMEER RT200 TRENCHER

SPECS	
Wheels	(Not Tracks)
Weight	1,800 LBS
6" X 36" Trench	
Fuel	Gasoline

PRICE	
EXCISE Tax	2.25%
\$60	per Hr
\$120	Daily Minimum (2 Hrs)



*Fuel and/or Cleaning charges will be applied at our discretion

NOTES

Delivery within a 15 mile radius is \$50 ONE WAY, \$100 delivered and picked up. \$1.75 per mile for anything further than 15 miles. Compatible with Tilt Trailer #50 (\$20 per day)

8" WHEEL TRENCHER MODEL #DD-8 EZ-TRENCH

**FOR SALE
\$500**

SPECS	
2"	Wide
8"	Deep
5.5HP	Honda



PRICE	
EXCISE Tax	2.25%
1 Day-Minimum (12 Business Hrs.)	\$70
3 Day	\$140
1 Week	\$245

HAWK STUMP GRINDER

FOR SALE
\$2,500

SPECS

13HP | Honda



PRICE

Minimum(4 Business Hrs.)	\$100
1 Day(12 Business Hrs.)	\$150
3 Day	\$300
1 Week	\$525

PORTABLE LIGHT TOWER SKID

SPECS

90,000 Lumens
23' Height At Full Extension
120V 15 Amp Output

PRICE

1 Day(12 Business Hrs.)	\$100
3 Day	\$200
1 Week	\$350

***O&L**



36" BRADLEY BRUSH MOWER

MODEL #36BB-BS25E

SPECS

25HP Briggs & Stratton; Commercial Turf Series; Engine, 5 Gallon Fuel Tank, Flip-Up Wheels To Easily Convert To Skis, 1/2" Thick Dual Break-Away Blades



PRICE

Minimum(4 Business Hrs.)	\$150
1 Day(12 Business Hrs.)	\$200
3 Day	\$400
1 Week	\$700

GENERAL TWO MAN

POST HOLE AUGER

MODEL#M330H

FOR SALE
\$1,500

SPECS

Engine: 5.5 HP (4.1 kw)
Honda GXV160, 4-stroke
Includes 8" or 12" Auger



PRICE

Minimum (4 Business Hrs.)	\$40
1 Day (12 Business Hrs.)	\$70
3 Day	\$140
1 Week	\$245

***O**

* Fuel Charges may apply

MAKITA 36V(18VX2) LXT® BL EARTH AUGER

MODEL #XGD01PT

SPECS

No Load Speed(Var. 2 Speed):
0 -350/0 - 1,400 RPM
Includes 6" or 8" Auger plus 21" Extension

PRICE

Minimum (4 Business Hrs.)	\$35
1 Day (12 Business Hrs.)	\$50
3 Day	\$100
1 Week	\$175

***O&L**



MUD MIXER MODEL # MMXR-3221

SPECS

Electric drivetrain has the ability to chew through over 40+ 80lb bags an hour. Revolutionary fully-adjustable water input designed to be used with concrete, mortar, stucco mix, poolcrete, and much more.

PRICE

Minimum (4 Business Hrs.)	\$80
1 Day- (12 Business Hrs.)	\$120
3 Day	\$240
1 Week	\$420

*O

*Cleaning Charges may apply



MULTIQUIP 24" EDGE TROWELER MODEL #CA4HM

FOR SALE
\$2,600

SPECS

4-blade, 24", Honda GX120, 3.5 HP, Min 70-130 Max RPM blade speed, manual clutch

PRICE

1 Day-Minimum (12 Business Hrs.)	\$60
3 Day	\$120
1 Week	\$210

*O

* Fuel Charges may apply



MULTIQUIP 36" TROWELER MODEL #J3H55

FOR SALE
\$2,700

SPECS

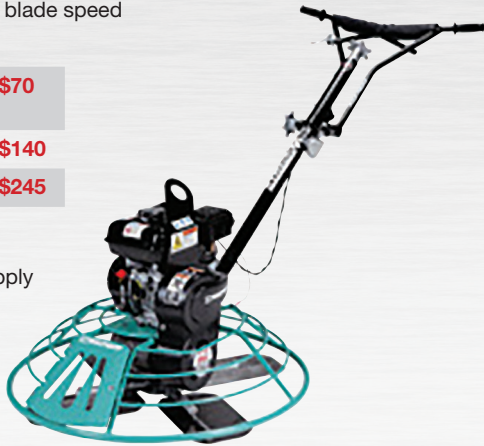
4-blade, 36", Honda GX160 4.8HP, Min 60-115 Max RPM blade speed

PRICE

1 Day-Minimum (12 Business Hrs.)	\$70
3 Day	\$140
1 Week	\$245

*O

* Fuel Charges may apply



TOMAHAWK CONCRETE SAW MODEL #TFS6H

FOR SALE
\$2,200

SPECS

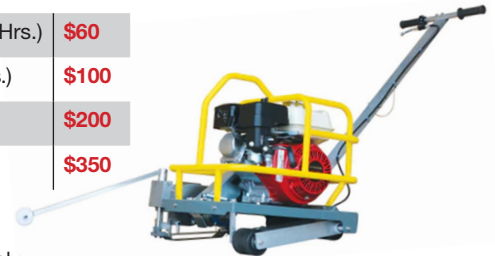
3.5 HP Honda GX120 Engine

PRICE

Minimum (4 Business Hrs.)	\$60
1 Day (12 Business Hrs.)	\$100
3 Day	\$200
1 Week	\$350

*O

* Fuel Charges may apply



MULTIQUIP 46" TROWELER MODEL #B46H90

FOR SALE
\$3,200

SPECS

4-blade, 46", Honda GX270, 8.5 HP, Min 60-130 Max RPM blade speed

PRICE

1 Day-Minimum (12 Business Hrs.)	\$80
3 Day	\$160
1 Week	\$280

*O

* Fuel Charges may apply



ALLEN 12' MAGIC SCREED MODEL #HD7070

FOR SALE
\$2,200

SPECS

Engine Honda Gx35 (35cc) Horsepower Class 1.5 Hp (1.1 Kw); Weight 30 Lb (13.5 Kg)

PRICE

1 Day-Minimum (12 Business Hrs.)	\$60
3 Day	\$120
1 Week	\$210

*O

* Fuel Charges may apply



BON TOOL 48" NO FINISH FLOAT & HANDLES MODEL #82-198

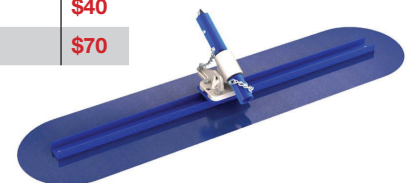
SPECS

Rounded ends to eliminate lap marks; U-Channel back bone; High grade blue steel blade

PRICE

1 Day-Minimum (12 Business Hrs.)	\$20
3 Day	\$40
1 Week	\$70

*O



KRAFT 48" CHANNEL FLOAT & HANDLES
MODEL #CC044

PRICE

1 Day-Minimum (12 Business Hrs.)	\$20
3 Day	\$40
1 Week	\$70



*O

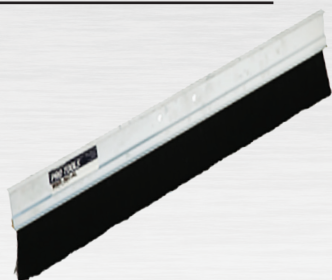
CONCRETE BROOM & HANDLES
WAGMAN CONCRETE FINISHING BROOM &
HANDLES MODEL #WBR48CAL

SPECS

48" Alum Finishing Broom Head

PRICE

1 Day-Minimum (12 Business Hrs.)	\$20
3 Day	\$40
1 Week	\$70



*O

MAKITA 14" SJS™ ELECTRIC
ANGLE CUTTER
MODEL #4114

FOR SALE
\$400

SPECS

Blade Diameter: 14"; AMPS: 15;
No Load Speed: 3,800 RPM; Max. Cutting Depth (14" diamond blade) : 5";
Max. Cutting Depth (14" cut-off wheel) : 5"

PRICE

Minimum (4 Business Hrs.)	\$30
1 Day (12 Business Hrs.)	\$50
3 Day	\$100
1 Week	\$175



*O

MAKITA 36V(18VX2) LXT® BL 9" POWER CUTTER
MODEL #XEC01PT1

SPECS

No Load Speed: 6,600 RPM; Max Cutting Depth: 3-1/2"; Electric Brake:
Yes; Switch Type: Rear Trigger Switch

PRICE

Minimum (4 Business Hrs.)	\$35
1 Day (12 Business Hrs.)	\$60
3 Day	\$120
1 Week	\$210



*O&L

MAKITA 14" 73 CC POWER CUTTER
MODEL #EK7301X1

FOR SALE
\$600

SPECS

Engine (max power) : 5.1 HP/3.8 kW;
No Load Speed/Max. Spindle Speed : 5,300 RPM;
Max. Cutting Depth : 5";
Wheel Diameter (in.) : 14"; Power Type : 2-stroke gas



PRICE

Minimum (4 Business Hrs.)	\$45
1 Day (12 Business Hrs.)	\$80
3 Day	\$160
1 Week	\$280



*O

* Fuel Charges may apply

MAKITA 14" 40VX2 POWER CUTTER
MODEL #GEC01PL4

SPECS

No Load Speed: 5,300 RPM
Max Cutting Depth: 5"
Overall Length: 31"
Vibration (m/s2): 2.5

PRICE

Minimum (4 Business Hrs.)	\$45
1 Day (12 Business Hrs.)	\$80
3 Day	\$160
1 Week	\$280



*L

70 LB. ADVANCED AVT® BREAKER HAMMER,
ACCEPTS 1-1/8" HEX BITS
MODEL #HM1812

SPECS

Blows Per Minute: 870 BPM; Impact Energy: 53.9(ft.lbs.) or
72.8J (Joules); AMPS: 15; Breaker/Demo Class: 70

PRICE

Minimum (4 Business Hrs.)	\$60
1 Day (12 Business Hrs.)	\$100
3 Day	\$200
1 Week	\$350



*O&L

MAKITA 80V MAX 28 LB. DEMOLITION HAMMER
MODEL #GMH02PM

SPECS

AWS® Capable; Blows Per Minute (variable speed) : 950 - 1,900 BPM
Impact Energy: 20.2(ft.lbs.) or 27.5 J(Joules); Vibration Control : Yes
Breaker/Demo class : 25

PRICE

Minimum (4 Business Hrs.)	\$40
1 Day (12 Business Hrs.)	\$70
3 Day	\$140
1 Week	\$245



*O

MAKITA 36V(18VX2) LXT BL 1-9/16" ADVANCED AVT® ROTARY HAMMER, ACCEPTS SDS-MAX BITS MODEL #XRH07PTUN

SPECS

Max Capacity (Core Bit): 4-1/8"; No Load Speed: 250-500 RPM; Blow Per Minute: 1,450-2,900 BPM; Impact Energy: 8.4 lbs; Vibration Level: 5 m/s²

PRICE

Minimum (4 Business Hrs.)	\$40
1 Day (12 Business Hrs.)	\$70
3 Day	\$140
1 Week	\$245



***O&L**

MAKITA 80VMAX (40V MAX X2) XGT BL 2" SDS-MAX AVT® ROTARY HAMMER KIT MODEL #GRH06PM

SPECS

Impact Energy: 15.7 ft.lbs./21.4 Joules; Blows Per Minute (Variable Speed): 1,100 - 2,250 BPM; No Load Speed (Variable Speed): 150 - 310 RPM

PRICE

Minimum (4 Business Hrs.)	\$45
1 Day (12 Business Hrs.)	\$80
3 Day	\$160
1 Week	\$280



***O**

MAKITA CORE BITS

AVAILABLE SIZES:

- 2-5/8"
- 3-1/8"
- 4"
- 5"



PRICE

Minimum (4 Business Hrs.)	\$20
1 Day (12 Business Hrs.)	\$30
3 Day	\$60
1 Week	\$105

***O&L**

MAKITA 18V LXT® LITHIUM-ION CORDLESS 8' CONCRETE VIBRATOR MODEL #XRV02T

SPECS

No Load Vibrations/Min. : 12,500; Vibrator Head Diameter : 1"; Vibrator Head Length : 8-11/16"; Shaft Length : 96"

PRICE

Minimum (4 Business Hrs.)	\$20
1 Day (12 Business Hrs.)	\$30
3 Day	\$60
1 Week	\$105



***O**

MAKITA 1" ROTARY HAMMER, ACCEPTS SDS-PLUS BITS (D-HANDLE) MODEL #HR2475

FOR SALE \$100

SPECS

AMPS : 7
Max. Capacity (concrete drilling) : 1";
Optimum Range (concrete drilling) : 3/16" - 1/2";
Max. Capacity (concrete drilling w/ core bit) : 3-1/8";
Blows Per Minute (variable speed) : 0 - 4,500 BPM;
No Load Speed (variable speed) : 0 - 1,100 RPM;
Vibration Control : No;
Vibration (m/s²) : 15.5

PRICE

Minimum (4 Business Hrs.)	\$25
1 Day (12 Business Hrs.)	\$40
3 Day	\$80



***O**

MAKITA 36V (18VX2) LXT 1" ROTARY HAMMER, ACCEPTS SDS-PLUS BITS MODEL #XRH05PT

SPECS

Optimum Range (Concrete Drilling) 1/4"-5/8";
Impact Energy: 2.2 ft.lbs/3 Joules;
Vibration(m/s²) 14.5;
Blows Per Minute: 0-5,000 BPM;
No Load Speed: 0-1,250 RPM

PRICE

Minimum (4 Business Hrs.)	\$25
1 Day (12 Business Hrs.)	\$40
3 Day	\$80
1 Week	\$140



***L**

MAKITA 18V LXT 7/8" ROTARY HAMMER KIT, ACCEPTS SDS-PLUS BITS MODEL #BHR241

FOR SALE \$100

SPECS

PRICE

Minimum (4 Business Hrs.)	\$25
1 Day (12 Business Hrs.)	\$40
3 Day	\$80



***O**

MAKITA 18V LXT® BL CORDLESS REBAR TYING TOOL MODEL #XRT01TK

SPECS

Rebar Size Capacity: #3x#3-#5x#5; Approx. Ties Per Charge: 5,300; Approx. Ties Per Reel: 120; Continuous Mode: Yes; Tying Speed (Second): .8; Wire Diameter (Gauge): 21ga.

PRICE

Minimum (4 Business Hrs.)	\$60
1 Day (12 Business Hrs.)	\$100
3 Day	\$200
1 Week	\$210



***O**

DRUM FLOOR SANDER
MODEL #EZ-8

FOR SALE
\$2,000

SPECS

115 Volts Electrical Motor 1.5 hp Universal; 60 Hz, totally enclosed; Drum Size 8 in (20 cm); Drum Speed 1,800 RPM; Size (L x W x H) 39 in x 15 in x 32 in

PRICE

Minimum (4 Business Hrs.)	\$50
1 Day (12 Business Hrs.)	\$80
3 Day	\$160
1 Week	\$280



*0

YAMAHA 7000 WATT GENERATOR
MODEL #EF7200E

FOR SALE
\$1,600

SPECS

Output: 6,000 Starting Watts/5,000 Continuous Watts
Size : 29.1" x 28.4" x 31.5", Fuel Tank Capacity: 6.9 Gallons

PRICE

Minimum (4 Business Hrs.)	\$50
1 Day (12 Business Hrs.)	\$80
3 Day	\$160
1 Week	\$280



*0

* Fuel Charges may apply

HONDA 2200 WATT GENERATOR W/ CO-MINDER™
MODEL #EU2200ITAN

SPECS

Honda GXR120 Engine; Displacement: 121cc; Fuel Tank Capacity: .95 gal
Honda My Generator app + Bluetooth® capability; CO-MINDER: advanced carbon monoxide detection system

PRICE

Minimum (4 Business Hrs.)	\$30
1 Day (12 Business Hrs.)	\$50
3 Day	\$100
1 Week	\$150



*0

* Fuel Charges may apply

HUSQVARNA FLOOR GRINDER
MODEL #PG 450

SPECS

Output Power(As rated by the engine/motor manufacturer) 2.05 hp
Rated Current: 13A; Voltage: 125; L530 Plug-In(3 prong twist-lock)

PRICE

1 Day-Minimum (12 Business Hrs.)	\$175
3 Day	\$350
1 Week	\$612



PLUS TOOLING

\$40 dollars per 1/16" of wear on the diamond teeth

*0

NOTE: When renting to customer our Yamaha 7000 Watt Generator works great with this floor grinder.

HUSQVARNA COMMERCIAL DRY VACUUM
MODEL # S26

SPECS

Rated Input Power: 3.2HP; Weight: 105 lbs.;
Rated Current: 20A; Air Flow: 258CFM; Vacuum: 3.5 PSI

PRICE

1 Day-Minimum (12 Business Hrs.)	\$50
3 Day	\$100
1 Week	\$175



*0

FESTOOL 45130 ECI CONCRETE GRINDER
W/ FESTOOL CT36E AC DUST EXTRACTOR

SPECS

Tool Diameter: 5-1/8"
Dust Extraction Connection Dia.: 1-7/16"

PRICE

Minimum (4 Business Hrs.)	\$60
1 Day (12 Business Hrs.)	\$100
3 Day	\$200
1 Week	\$350



PLUS TOOLING

\$40 dollars per 1/16" of wear on the diamond teeth

*0



CHERRY HILL U-SAND
146 FLOOR SANDER

FOR SALE
\$2,000

SPECS

1-1/2 HP; RPM: 3,450; Volts: 115; Amps: 14.4
6" Hook & Loop Discs.

PRICE

Minimum (4 Business Hrs.)	\$50
1 Day (12 Business Hrs.)	\$80
3 Day	\$160
1 Week	\$280



*0

*This sander is not for use on exterior or unfinished plywoods. Please use only on hardwood floors.

HUSQVARNA LF 80 LAT PLATE COMPACTOR PRODUCT # 967855002

FOR SALE
\$1,750

SPECS

Engine: Honda GX160
Plate Width: 16.54 in

PRICE

Minimum (4 Business Hrs.)	\$40
1 Day (12 Business Hrs.)	\$70
3 Day	\$140
1 Week	\$245

*O

* Fuel Charges may apply



FLOOR REMOVER JACKHAMMER & TROLLEY MAKINEX JHT-H & MAKITA HM1317CB

SPECS

6 Angle Positions (20 degree-80 degree); BPM: 730/1,450; Impact Energy: 34.9J; Amps: 14; Breaker Mass: 40; Weight: 110 lbs.

PRICE

Minimum (4 Business Hrs.)	\$100
1 Day (12 Business Hrs.)	\$150
3 Day	\$300
1 Week	\$525
Replacement Blades	\$30

*O



POWER NAIL 18-GAUGE HARDWOOD FLOORING NAILER MODEL #50P

SPECS

Fasteners: 18ga 1-3/4" Power Nail; Operating Pressure 80-110 Psi;
Dimensions: 16"L X 5.5"W X 17"H; Weight: 11 Lbs

PRICE

Minimum (4 Business Hrs.)	\$30
1 Day (12 Business Hrs.)	\$50
3 Day	\$100
1 Week	\$175

*O



BON TOOL LINOLEUM ROLLER-100 LB. MODEL #14-556

SPECS

Wheel: 5 1/4" Roller Diameter

PRICE

Minimum (4 Business Hrs.)	\$25
1 Day (12 Business Hrs.)	\$40
3 Day	\$80
1 Week	\$140

*O



D-CUT FLOORING SHEARS MODEL #LP-330

SPECS

Designed to cut all types of soft flooring
Straight cut, notch cut, lengthwise cut and angle cut
13" cutting width and 10mm cutting depth

PRICE

Minimum (4 Business Hrs.)	\$25
1 Day (12 Business Hrs.)	\$40
3 Day	\$80
1 Week	\$140

*O



BOSTITCH® 18 GAUGE FLOORING STAPLER MODEL #EHF1838K

SPECS

Fastener Length:N1-1.5 in
Operating Pressure: 70-120 psi

PRICE

Minimum (4 Business Hrs.)	\$20
1 Day (12 Business Hrs.)	\$30
3 Day	\$60
1 Week	\$105

*O



ROBERTS POWER-LOK STRETCHER VALUE KIT MODEL #10-254V

SPECS

Power-Lok Swivel Head Locks Into 17 Different "Stretch/Pattern
Holding" Positions
Stretch Up To 38 Feet
Steel Handle On Head For Better Grip And Repositioning

PRICE

1 Day-Minimum (12 Business Hrs.)	\$50
3 Day	\$100
1 Week	\$175

*O



FESTOOL PLANEX EASY DRYWALL SANDER & DUST EXTRACTOR

MODEL: CT36EAC

MODEL: LHSE225EQ

SPECS

Model: CT36EAC
 Container Capacity: 9.5 gal.; Filter Bag Capacity: 9 gal.
 Automatic filter cleaning & automatic-start,
 for high-volume, fine dust capture. Can be individually
 retrofitted with Bluetooth module for remote starting.

Low weight & perfect balance to reduce fatigue.
 Flexible head design allows greater freedom-of-movement
 for easier sanding.
 Move easily & sand into tight spots effortlessly guiding
 the PLANEX Easy where you need it most for an
 unparalleled surface finish.

PRICE

Minimum (4 Business Hrs.)	\$60
1 Day (12 Business Hrs.)	\$100
3 Day	\$200
1 Week	\$350

Sandpaper: **\$2.00** per sheet

***O**



MARSHALL TOWN PROFESSIONAL KNEE KICKER

ID: 28783

SPECS:

Adjustable Pins
 Thicker pad for more knee relief
 Handle is extendable in length (18 3/4" - 22 3/4")

PRICE:

1 Day-Minimum (12 Business Hrs.)	\$15
3 Day	\$30
1 Week	\$52



***O**

MARSHALL TOWN QLT KNEE KICKER

ID: 28784

SPECS:

Soft grip handle
 Foam pad for knee comfort

PRICE:

1 Day-Minimum (12 Business Hrs.)	\$10
3 Day	\$20
1 Week	\$35



***O**

MARSHALL TOWN CARPET SEAMING IRON

ID: 28799

SPECS:

120 Volt 3-Prong Cord
 Adjustable Temperature (145°F-445°F)
 Built in heat shield

PRICE:

1 Day-Minimum (12 Business Hrs.)	\$15
3 Day	\$30
1 Week	\$52



***O**

FESTOOL AUTO-FEED CORDLESS DRYWALL SCREW GUN

MODEL #DWC 18-4500

SPECS

*Efficiency with motor speed of 4,500 RPM coupled
 with the auto-feed magazine using collated screws, makes fast work of
 hanging sheets while the impulse-drive functionality provides exceptional
 battery life. *Equipped with a magazine attachment for using commonly
 available collated screws like Senco.

PRICE

Minimum (4 Business Hrs.)	\$30
1 Day (12 Business Hrs.)	\$50
3 Day	\$100
1 Week	\$175



***O**

BON PRO PLUS DRYWALL VERSA LIFTER

MODEL #15-560

SPECS

Maximum Height: 14' 9"
 Load Capacity: 175 lbs.
 Lifts Plaster Board Horizontal,
 Angeled or Vertical
 Step Platform For Overhead Work

PRICE

Minimum (4 Business Hrs.)	\$40
1 Day (12 Business Hrs.)	\$60
3 Day	\$120
1 Week	\$210



***O**

GRACO RENTAL PRO PAINT SPRAYER
MODEL #230ES

FOR SALE
\$1,000

PRICE

1 Day-Minimum (12 Business Hrs.)	\$100
3 Day	\$200
1 Week	\$350

***O**



HUSQVARNA TS 60 TILE SAW

SPECS

120 Volt
14 Amp
Blade diameter: max10 in
Cutting depth: max2.75 in
Max cutting length: 28 in

PRICE

Minimum (4 Business Hrs.)	\$50
1 Day (12 Business Hrs.)	\$80
3 Day	\$160
1 Week	\$280

***O&L**



QEP 7" (180 MM) 650XT TILE WET SAW

SPECS

Motor: 3/4 HP / 120V-60Hz / 4.8 Amps
Blade Capacity: 7" (180 mm)
Depth of Cut: 1-1/4" (31 mm) Thick Tile

PRICE

Minimum (4 Business Hrs.)	\$20
1 Day (12 Business Hrs.)	\$30
3 Day	\$60
1 Week	\$105

***O**



WATERSTORM 3000 PSI PRESSURE WASHER
MODEL #MP2530HAI

SPECS

Honda GX270; AR XMU3G30D; 3 US GPM;
50' Hose & 4 Spray Nozzles

PRICE

1 Day-Minimum (12 Business Hrs.)	\$80
3 Day	\$160
1 Week	\$280

***O**

* Fuel Charges may apply



WATERSTORM 4,200 PSI COMMERCIAL PRESSURE WASHER
MODEL #MP4042HV

SPECS

Honda GX 390, 4 US GPM, 50' Hose & 4 Spray Nozzles

PRICE

1 Day-Minimum (12 Business Hrs.)	\$80
3 Day	\$160
1 Week	\$280

***L**

* Fuel Charges may apply



TELESCOPING PRESSURE WASHER WAND
MODEL #55775

SPECS

4,000 PSI; 10.5 GPM; Extends 6-18 ft; Fiberglass/Aluminum;
Works with MP4042HV & MP2530HAI Pressure Washers

PRICE

1 Day-Minimum (12 Business Hrs.)	\$30
3 Day	\$60
1 Week	\$105

***L**



CHROME GUTTER CLEANER ATTACHMENT
MODEL # 43381

SPECS

4,000 Max PSI; Works With Telescoping Pressure Washer Wand

PRICE

1 Day-Minimum (12 Business Hrs.)	\$10
3 Day	\$20
1 Week	\$35

***L**



J-AIR GAS AIR COMPRESSOR

MODEL # 1113H5-9P

SPECS

Honda 5.5 HP; 10.8 CFM @ 100 PSI (Runs 5-6 Framing Guns, 7-8 Roofing Guns)

PRICE

Minimum (4 Business Hrs.)	\$50
1 Day (12 Business Hrs.)	\$80
3 Day	\$160
1 Week	\$280



*O

* Fuel Charges may apply

SEWER JETTER HOSE

SPECS

Length: 100'; Can be used in any size drain; Standard 3/8" Quick Connect

PRICE

Minimum (4 Business Hrs.)	\$20
1 Day (12 Business Hrs.)	\$30
3 Day	\$60
1 Week	\$105



*O

MAKITA 3.0 HP* BIG BORE™ AIR COMPRESSOR

MODEL #MAC5200

SPECS

Performance: 6.5 CFM; Tank : 5.2 gal.; Maximum Pressure : 140 PSI; Amp @ Max Pressure: 13.8; 3 HP

PRICE

Minimum (4 Business Hrs.)	\$30
1 Day (12 Business Hrs.)	\$50
3 Day	\$100
1 Week	\$175



*O

ELECTRIC EEL 50' ROTO ROOTER

MODEL E

SPECS

1/3 HP; Amps: 7.0; Volts: 110; Drain Size: 1 1/4in.-3in.

PRICE

Minimum (4 Business Hrs.)	\$40
1 Day (12 Business Hrs.)	\$60
3 Day	\$120
1 Week	\$210



*O&L

100' DRAIN SNAKE

PRICE

Minimum (4 Business Hrs.)	\$10
1 Day (12 Business Hrs.)	\$15
3 Day	\$30
1 Week	\$52



*O&L

MASTER PLUMBER SUBMERSIBLE PUMP

MODEL #540086

SPECS

1/6 HP Motor; 1470-GPH

PRICE

Minimum (4 Business Hrs.)	\$10
1 Day (12 Business Hrs.)	\$15
3 Day	\$30
1 Week	\$52



*O

PISTOL GRIP POWER DRUM AUGER

MODEL #148142

SPECS

1/4" x 25'

PRICE

Minimum (4 Business Hrs.)	\$10
1 Day (12 Business Hrs.)	\$15
3 Day	\$30



*O

BOSTITCH COIL ROOFING NAILER
MODEL #RN46-1

SPECS

Operating Pressure:
70 -120 psi

PRICE

Minimum (4 Business Hrs.)	\$25
1 Day (12 Business Hrs.)	\$40
3 Day	\$80
1 Week	\$140

*0



DURA HEAT REDDY HEATER
MODEL #DFA125C

SPECS

BTU: 125,000; Fuel: K-1 Kerosene(No Diesel); Consumption: .953/per hour; Capacity: 10.0 Gal.; Volts: 120; Amps: 2.5

PRICE

Minimum (4 Business Hrs.)	\$30
1 Day (12 Business Hrs.)	\$40
3 Day	\$80
1 Week	\$140

*0

* Fuel Charges may apply



SHINGLE HOG ROOF REMOVER
MODEL #TBD2

FOR SALE
\$900

PRICE

1 Day-Minimum (12 Business Hrs.)	\$80
3 Day	\$160
1 Week	\$280

*0



MAKITA 10" TABLE SAW W/ STAND
MODEL NUMBER #2705

SPECS

Arbor: 5/8"; Blade: 10"; Max Cutting: 3-9/16" (90 Degrees); Volts: 120; Amps:15.0; Weight: 115 lbs.; Size: 32"x36"x15.3"

PRICE

Minimum (4 Business Hrs.)	\$50
1 Day (12 Business Hrs.)	\$80
3 Day	\$160
1 Week	\$280

*0



5' MAGNETIC SWEEPER W/ PNEUMATIC TIRES

PRICE

Minimum (4 Business Hrs.)	\$15
1 Day (12 Business Hrs.)	\$20
3 Day	\$40
1 Week	\$70

*0



MAKITA 3 1/4" PLANER
MODEL #KP0800K

SPECS

Planing Width : 3-1/4"; Planing Depth : 3/32"; No Load Speed : 17,000 RPM; AMPS : 6.5

PRICE

Minimum (4 Business Hrs.)	\$15
1 Day (12 Business Hrs.)	\$25
3 Day	\$50
1 Week	\$87

*0



INTEC FORCE2 INSULATION BLOWER

SPECS

Motor Volts: 115
Motor Amps: 15.0x2
Motor HP: 1-1/2
Blower Volts: 115
Blower Amps: 15
Hopper: 9 cu. ft.
Weight: 260 lbs.
Hose: 3"
Note: 2-15 Amps Circuits Required

PRICE

1 Day-Minimum (12 Business Hrs.)	\$40
3 Day	\$80
1 Week	\$140

*0



MAKITA 6" RANDOM ORBIT SANDER
MODEL #BO6030

SPECS

Orbits Per Minute (variable speed) : 4,000 - 10,000 OPM
AMPS : 2.7

PRICE

Minimum (4 Business Hrs.)	\$15
1 Day (12 Business Hrs.)	\$25
3 Day	\$50
1 Week	\$87

*0



MAKITA 7 1/4" CIRCULAR SAW
MODEL #5007F

SPECS

AMPS: 15
Blade Size: 7-1/4"(5/8" Arbor)
Max Cutting Capacity: 2-3/8"(90 Degree)

PRICE

Minimum (4 Business Hrs.)	\$15
1 Day (12 Business Hrs.)	\$25
3 Day	\$50
1 Week	\$87



*O

MAKITA 7" ANGLE GRINDER, WITH AC/DC SWITCH
MODEL #GA7001L

SPECS

15 Amps

PRICE

Minimum (4 Business Hrs.)	\$25
1 Day (12 Business Hrs.)	\$40
3 Day	\$80
1 Week	\$140



*O

18V LXT® LITHIUM-ION BRUSHLESS CORDLESS HIGH-TORQUE 1/2" SQ. DRIVE IMPACT WRENCH
MODEL #XWT08Z

SPECS

Fastening Torque (ft.lbs./N·m):
740 ft.lbs./1,000 N·m
Speed Power Selection: 3

PRICE

Minimum (4 Business Hrs.)	\$20
1 Day (12 Business Hrs.)	\$30
3 Day	\$60
1 Week	\$105



*O

MAKITA 10-1/4" CIRCULAR SAW W/ ELECTRIC BRAKE
MODEL #5201N-A

SPECS

Volts: 115
Amps: 12
Blade Size: 10-1/4"

PRICE

Minimum (4 Business Hrs.)	\$25
1 Day (12 Business Hrs.)	\$40
3 Day	\$80
1 Week	\$140



*O

SWENSON HEAVY DUTY PIVOT SHEAR
MODEL #35101

SPECS

Cuts 24-29ga. Panel Lock Plus
Cut Length Capacity: 48"
Weight: 120 lbs.

PRICE

1 Day-Minimum (12 Business Hrs.)	\$70
3 Day	\$140
1 Week	\$245



*O

MAKITA 1/2" ANGLE DRILL
MODEL #DA6300

SPECS

Capacity (steel) : 1/2" (13 mm)
Capacity (wood) : 1-3/8" (36 mm)
No Load Speed (2 spd) : 300/1200 RPM
AMPS : 7.5

PRICE

Minimum (4 Business Hrs.)	\$20
1 Day (12 Business Hrs.)	\$30
3 Day	\$60
1 Week	\$105



*O

TAPCO 10' ALUMINUM BRAKE W/ LEGS
MODEL #TAPCO PRO III-C

PRICE

Minimum (4 Business Hrs.)	\$50
1 Day (12 Business Hrs.)	\$80
3 Day	\$160
1 Week	\$280



*O

PIPE CUTTER, REAMER, AND VISE

PRICE

Minimum (4 Business Hrs.)	\$20
1 Day (12 Business Hrs.)	\$30
3 Day	\$60
1 Week	\$105

*O



THREE-WAY PIPE THREADER
MODEL #RIDGID 31A

PRICE

Minimum (4 Business Hrs.)	\$15
1 Day (12 Business Hrs.)	\$25
3 Day	\$50
1 Week	\$87

*O



SHARKBITE PEX CINCH CLAMP TOOL
MODEL#608743

PRICE

Minimum (4 Business Hrs.)	\$7.50
1 Day (12 Business Hrs.)	\$10
3 Day	\$20
1 Week	\$35

*O&L



RIDGID ELECTRIC PIPE THREADER
MODEL 700

SPECS

1/4"-2"

PRICE

Minimum (4 Business Hrs.)	\$30
1 Day (12 Business Hrs.)	\$50
3 Day	\$100
1 Week	\$175

*O



CLAY TILE BREAK

PRICE

Minimum (4 Business Hrs.)	\$15
1 Day (12 Business Hrs.)	\$20
3 Day	\$40
1 Week	\$70

*O



APPLIANCE CART
MODEL # MILWAUKEE TRUCK DIVISION 40188

PRICE

Minimum (4 Business Hrs.)	\$20
1 Day (12 Business Hrs.)	\$30
3 Day	\$60
1 Week	\$105

*O



WILSONART 30LB. CANISTERIZED CONTACT ADHESIVE
MODEL: 700

PRICE

\$19 Per lb

1 Day-Minimum (12 Business Hrs.)	\$20
3 Day	\$40
1 Week	\$70

*O

